

# ARDEN EQUIPMENT PRESENTATION



NEW

DEMOLITION BEAM



NEW

SORTING GRAB MINI-BLUE



NEW

CONCRETE CRUSHER WITH BOOSTER



NEW

EXCAVATOR BUCKET WITH NEW DESIGN



NEW

QUICK HITCH A10



PUBLIC WORKS



DEMOLITION



RECYCLING



HANDLING



BUCKET • QUICK HITCH • SORTING GRAB • SHEAR • CRUSHER • BREAKER • CLAMSHELL • GRAPPLE



**Xavier PINGRET**  
**CEO of the group**  
**ARDEN EQUIPMENT**

« Supporting you and preparing for the future together »

Dear customers and partners,

Our desire as a manufacturer and specialist of equipments is to support you every day to offer ever more demanding and efficient products.

The concept of service is part of our DNA. Whether through the after sales department, the Repair + program or even advice, all our teams are committed to satisfying you.

Innovation is at the heart of our priorities while respecting your needs, safety and the environment.

For example, throughout this presentation, you will come across the new Mini-Blue sorting grabs for mini-excavators from 0.8 to 6 tons, the redesign AS055 scrap shear, a booster for concrete crushing machines BBH020 and BBH031, a demolition beam for your demolition projects above 100 meters, a fully automatic quick hitch, the AIO601, available for machines from 26 to 40 tons, and a range of hydraulic magnet for machines from 7 to 45 tons.

Arden Equipment drives a sustainable policy. We will keep on working to earn your trust in the long term.

Thank you for your commitment and loyalty.

Best regards,  
Xavier PINGRET



## Innovation and safety at the heart of Arden Equipment's commitment

A French manufacturer of equipment for public works machinery since 1956, Arden Equipment serves market needs in the public works, demolition, recycling and handling sectors.

The company's main priorities are quality, innovation and safety

### Quality for more performance

Arden Equipment's global approach is ultimate customer's satisfaction. Engineering, technical expertise and know-how are fundamental criteria in the design of durable high-performance tools.

### Arden Equipment in a few figures



**More than 200**  
employees



**6**  
subsidiaries



Turnover  
**36 M€**



**68 years**  
of existence



Clients on  
**4 continents**



**4** business  
sectors





# PUBLIC WORKS

**QUICK HITCHES**



0.8t - 90t

**BUCKETS**



0.8t - 130t



**AIO Quick Hitch - Arden Tilt Rotor - Bucket**



**QA Quick Hitch - Bucket**



**CW Quick Hitch**



**AIO Quick Hitch**



**AIO Quick Hitch**



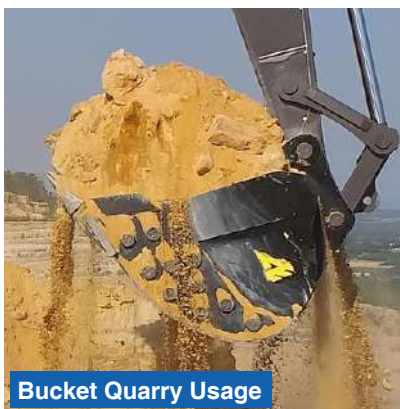
**Arden Tilt Rotor - Bucket**



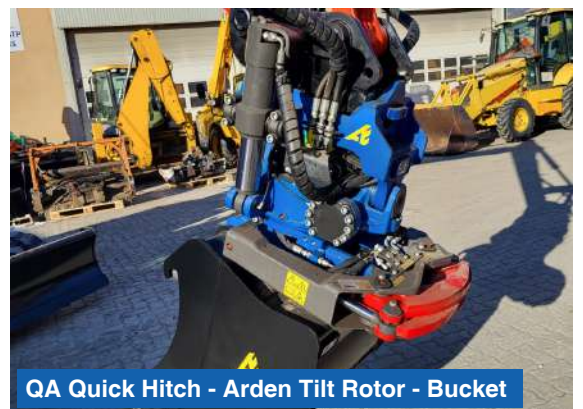
**S Quick Hitch - Bucket**



**UA Quick Hitch**



**Bucket Quarry Usage**



**QA Quick Hitch - Arden Tilt Rotor - Bucket**





# DEMOLITION

CRUSHERS  13t - 80t

BREAKERS  0.5t - 100t

SHEARS  2.5t - 100t

SORTING GRAB  2.5t - 90t

DEMOLITION BEAM 



Hydraulic Crusher



Hydraulic Breaker



Shears with changeable jaws



Shears with dedicated jaws



Demolition and sorting grab



Demolition beam





# HANDLING & RECYCLING

GRAPPLE  6t - 90t

CLAMSHELLS  5t - 70t

BUCKETS  7t - 55t

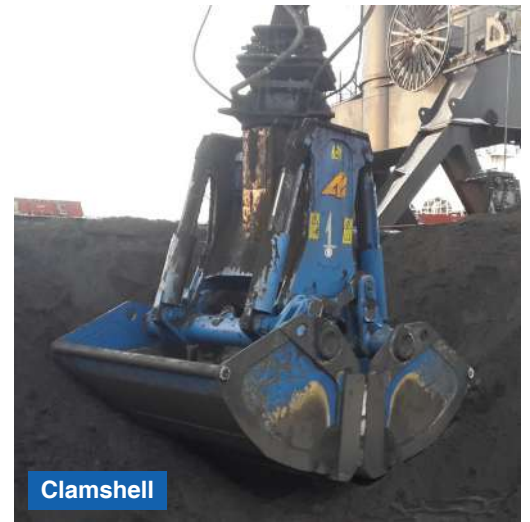
SHEARS  9 - 90t

SORTING GRAB  0.8 - 6t

MAGNET  7 - 40t



Grapple



Clamshell



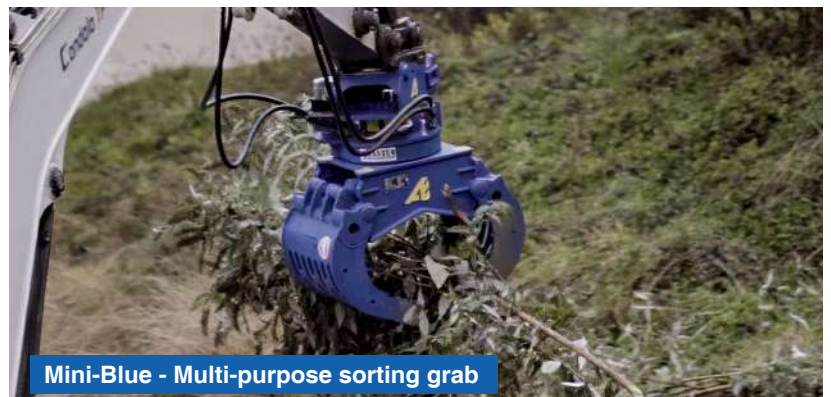
Earthmoving clamshell



Loader bucket



Scrap shear



Mini-Blue - Multi-purpose sorting grab



Arden Magnet - Hydraulic magnet





# RAIL

**BALLAST TRACK REMOVER**

 16t - 22t

**RAILWAY GRABS**

 8t - 23t

**BEAM AND CATENARY GRABS**

 14t - 23t



Ballast track remover



Railway Grab



Beam and catenary grabs



# ARDEN JET

OPTION AVAILABLE ON SHEARS, CRUSHERS, SORTING GRABS, CLAMSHELLS, BREAKERS



Arden Jet - Shears with changeable jaws



Arden Jet - Demolition and sorting grab



Arden Jet - Breaker

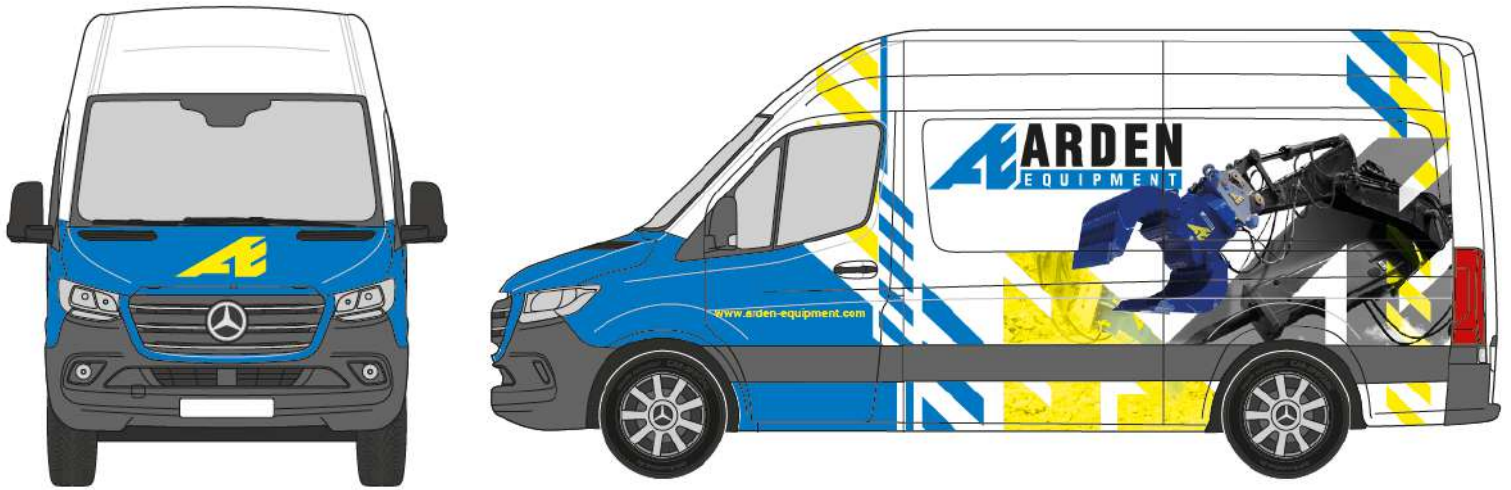


Arden Jet - Crusher



Arden Jet - Rehandling clamshell





## MOBILE SERVICE ENGINEERS

MOBILE SERVICE ENGINEERS AVAILABLE TO MEET YOUR NEEDS

Arden Equipment is committed to meeting the needs of its customers by putting at their service a team of qualified technicians who bring their know-how and expertise from the commissioning to the repair of tools.

### A question, a tip, a breakdown?

Our experts are available to answer you.

### REPAIR SERVICE +

The Repair + service gives your tools a second life.

Ask our experts for advice!

**BEFORE**



**AFTER**



### AFTERMAKET

+33 (0)3 24 33 64 50  
sav@arden-equipment.com

### SPARE PARTS

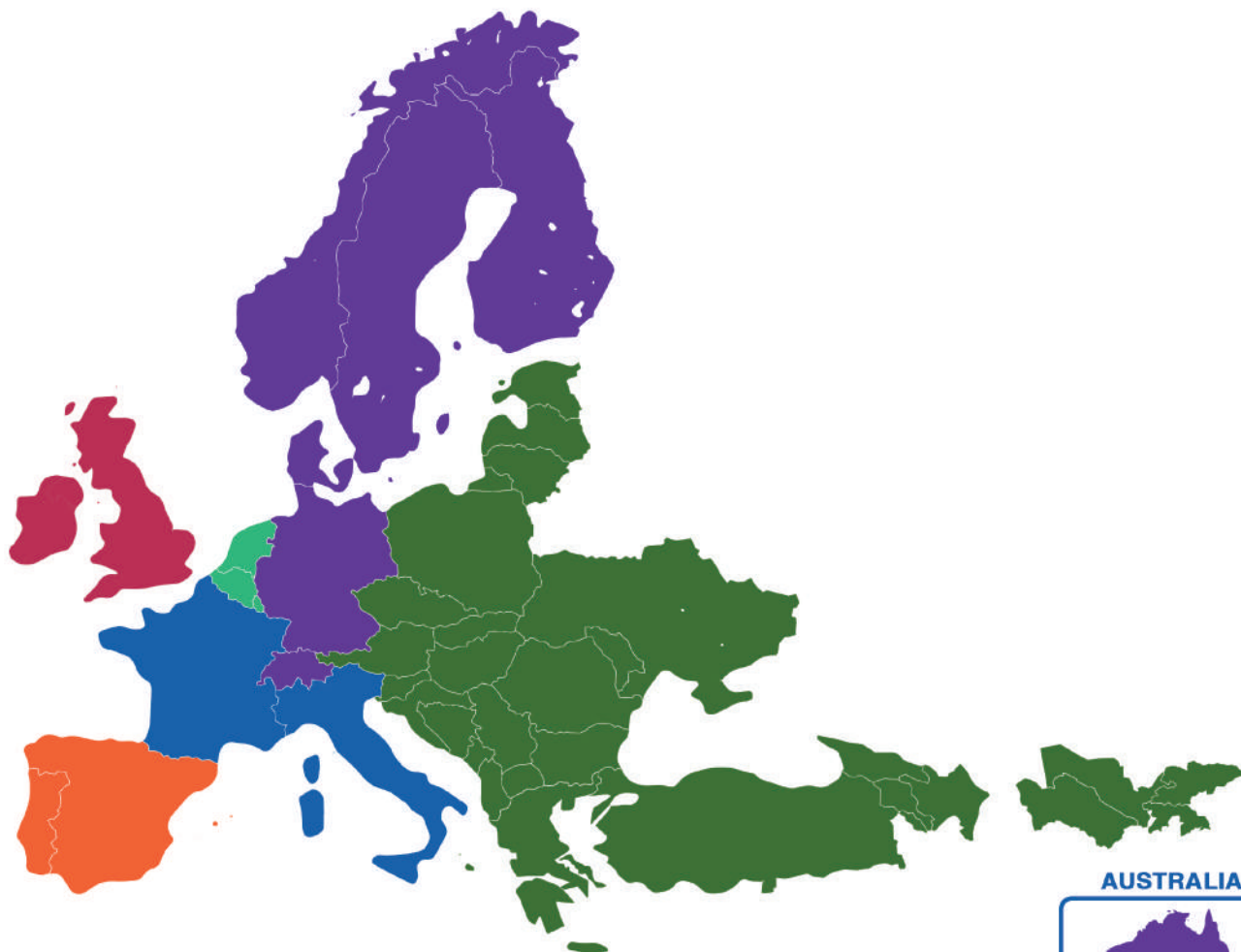
+33 (0)3 24 33 64 47  
pr@arden-equipment.com



# ARDEN

EQUIPMENT

## OUR TEAM



**Daniel DUPUY**  
 +33 (0)6 03 83 92 12  
 daniel.dupuy@arden-equipment.com  
 + WORLDWIDE



**Sean DONOVAN**  
 +44 7 908 715 631  
 sean.donovan@arden-equipment.com



**Lewis TABB**  
 +44 7 946 378 556  
 lewis.tabb@arden-equipment.com



**Jesús GINÉS**  
 +34 667 65 37 96  
 jesus.gines@arden-equipment.com



**Alvaro MANSO**  
 +34 625 92 78 98  
 alvaro.manso@arden-equipment.com



**Jean-Paul DEGRYSE**  
 +32 496 52 04 59  
 jp.degryse@arden-equipment.com



**Igor MALCEFF**  
 +359 878 57 67 63  
 igor.malceff@arden-equipment.com



**Artashes ARAKELIAN**  
 +421 915 838 377  
 artashes.arakelian@arden-equipment.com



**Julien NEIRINCK**  
 +33 (0)6 02 12 07 78  
 julien.neirinck@arden-equipment.com



+33 (0)3 24 33 64 30



contact@arden-equipment.com



9 avenue de l'Industrie FR - 08000 Charleville-Mézières



www.arden-equipment.com

SIRET 380 519 686 00022 APE 4663Z R.C.S SEDAN N°TVA : FR 20 380 519 686

