



ARDEN

EQUIPMENT

PRESENTATION

2023



PUBLIC WORKS



DEMOLITION



RECYCLING



HANDLING



GRAB • SHEAR • CRUSHER • BREAKER • QUICK HITCH • BUCKET • CLAMSHEL • GRAPPLE



Xavier PINGRET
CEO of the group
ARDEN EQUIPMENT

« Meeting the new challenges of tomorrow »

Dear clients and partners,

Arden Equipment's mission, for more than 65 years, is to offer innovative and high-performance equipment to serve your needs for today and tomorrow.

2023 is likely to bring its share of disruptions. However, we know that it is in times of crisis that we have the ability to reinvent ourselves to provide even more appropriate solutions.

Arden Equipment is committed to stand by your side through its industrial, commercial and technical teams supporting you on a daily basis and assisting with your problems.

New products enrich our range of equipment: the 3 series hydraulic and mechanical quick couplers where safety has been increased, the 3 series teeth which are more resistant to wear, new capacities for tilting buckets for mini-excavators and a new hydraulic breaker offering the possibility of being equipped with the Arden Jet.

Thank you for your trust and loyalty.

Yours sincerely,

Xavier PINGRET



Innovation and safety at the heart of Arden Equipment's commitment

A French manufacturer of equipment for public works machinery since 1956, Arden Equipment serves market needs in the public works, demolition, recycling and handling sectors.

The company's main priorities are quality, innovation and safety

Quality for more performance

Arden Equipment's global approach is ultimate customer's satisfaction. Engineering, technical expertise and know-how are fundamental criteria in the design of durable high-performance tools.

Arden Equipment in a few figures



Clients on **6** continents



4 business sectors



67 years
of existence



More than 250
employees



6 subsidiaries



Turnover **40 M€**



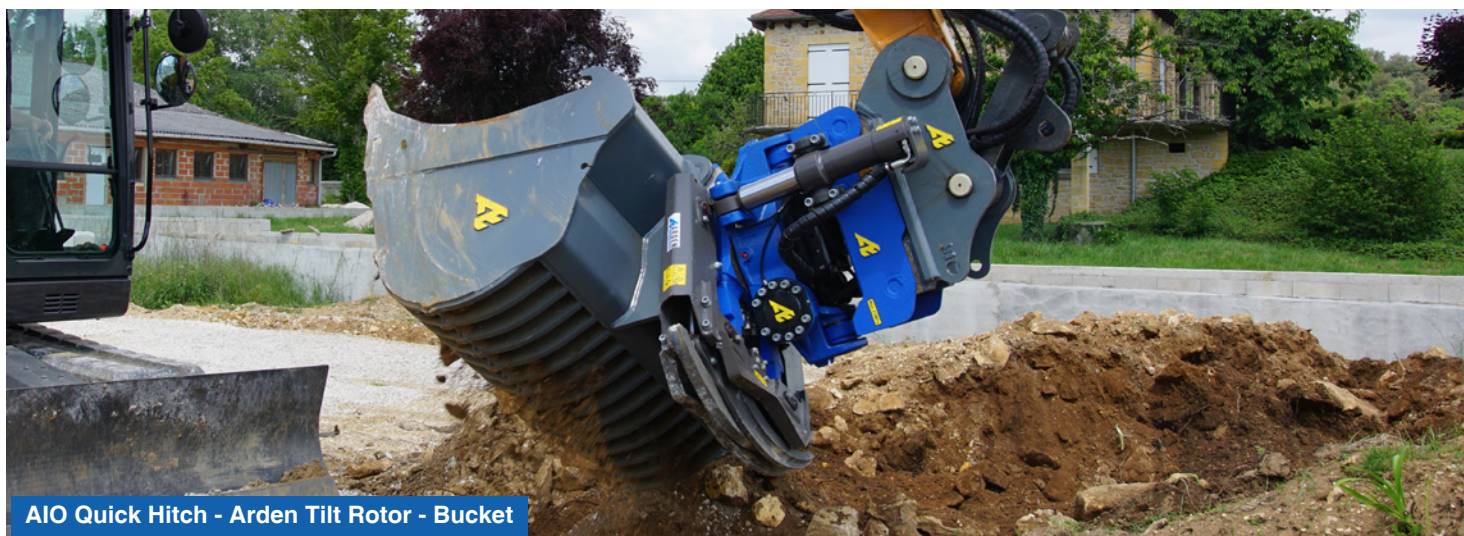
Annual investment **2 M€**



PUBLIC WORKS

QUICK HITCHES  0.8t - 90t

BUCKETS  0.8t - 130t



AIO Quick Hitch - Arden Tilt Rotor - Bucket



QA Quick Hitch - Bucket



CW Quick Hitch



AIO Quick Hitch



AIO Quick Hitch



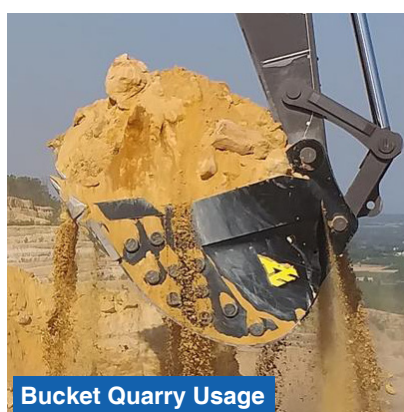
Arden Tilt Rotor - Bucket



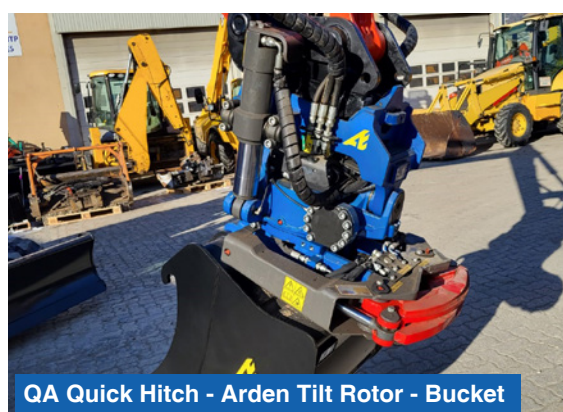
S Quick Hitch - Bucket



UA Quick Hitch



Bucket Quarry Usage



QA Quick Hitch - Arden Tilt Rotor - Bucket



DEMOLITION

SHEARS 
2.5t - 100t

SORTING GRABS 
2.5t - 90t

CRUSHERS 
13t - 80t

BREAKERS 
0.5t - 100t



Hydraulic Crusher



Hydraulic Breaker



Shears with changeable jaws



Shears with dedicated jaws



Demolition and sorting grab



Scrap shear



HANDLING & RECYCLING

GRAPPLES  6t - 90t

CLAMSHELLS  5t - 70t

LOADER BUCKETS  4.5t - 55t



Grapple



Rehandling clamshell



Earthmoving clamshell



Loader bucket



Sorting grab



Loader bucket



Beet clamshell



ENGINEERING

**BALLAST
TRACK REMOVER** 16t - 22t



**RAILWAY
GRABS** 8t - 23t



**BEAM AND
CATENARY GRABS** 14t - 23t



Ballast track remover



Railway Grab



Beam and catenary grabs



ARDEN JET

OPTION AVAILABLE ON SHEARS, CRUSHERS, SORTING GRABS, CLAMSHELLS, BREAKERS



Arden Jet - Shears with changeable jaws



Arden Jet - Demolition and sorting grab



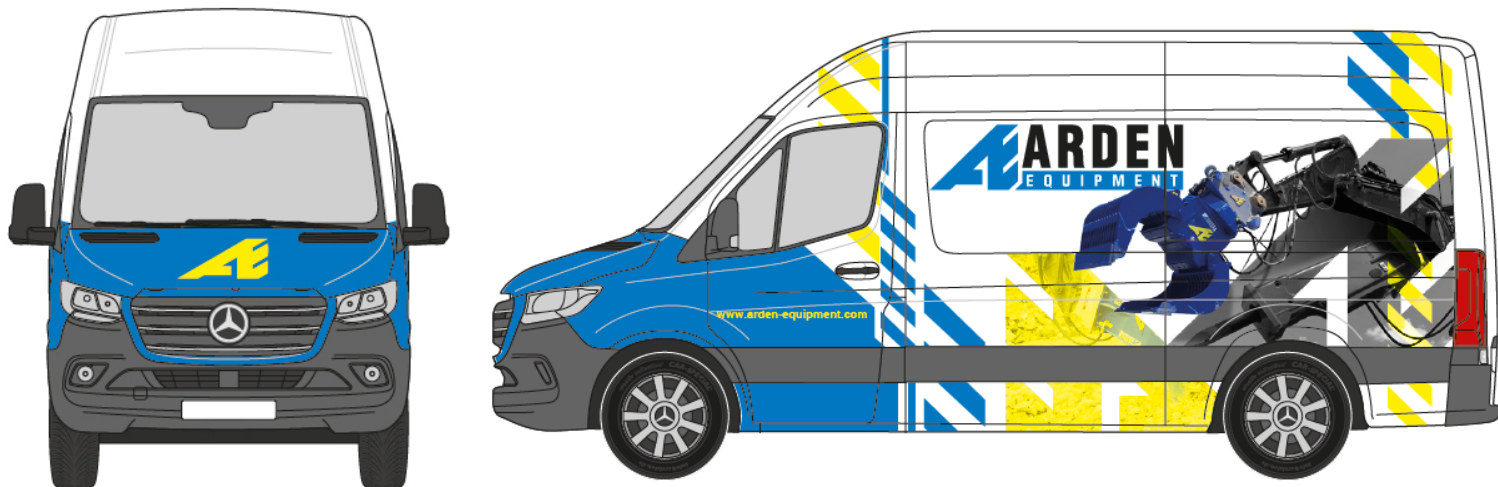
Arden Jet - Breaker



Arden Jet - Crusher



Arden Jet - Rehandling clamshell



MOBILE SERVICE ENGINEERS

MOBILE SERVICE ENGINEERS AVAILABLE TO MEET YOUR NEEDS

Arden Equipment is committed to meeting the needs of its customers by putting at their service a team of qualified technicians who bring their know-how and expertise from the commissioning to the repair of tools.

A question, a tip, a breakdown?

Our experts are available to answer you.

REPAIR SERVICE +

The Repair + service gives your tools a second life.

Ask our experts for advice!

BEFORE



AFTER



AFTERMARKET

+33 (0)3 24 33 64 50
sav@arden-equipment.com

SPARE PARTS

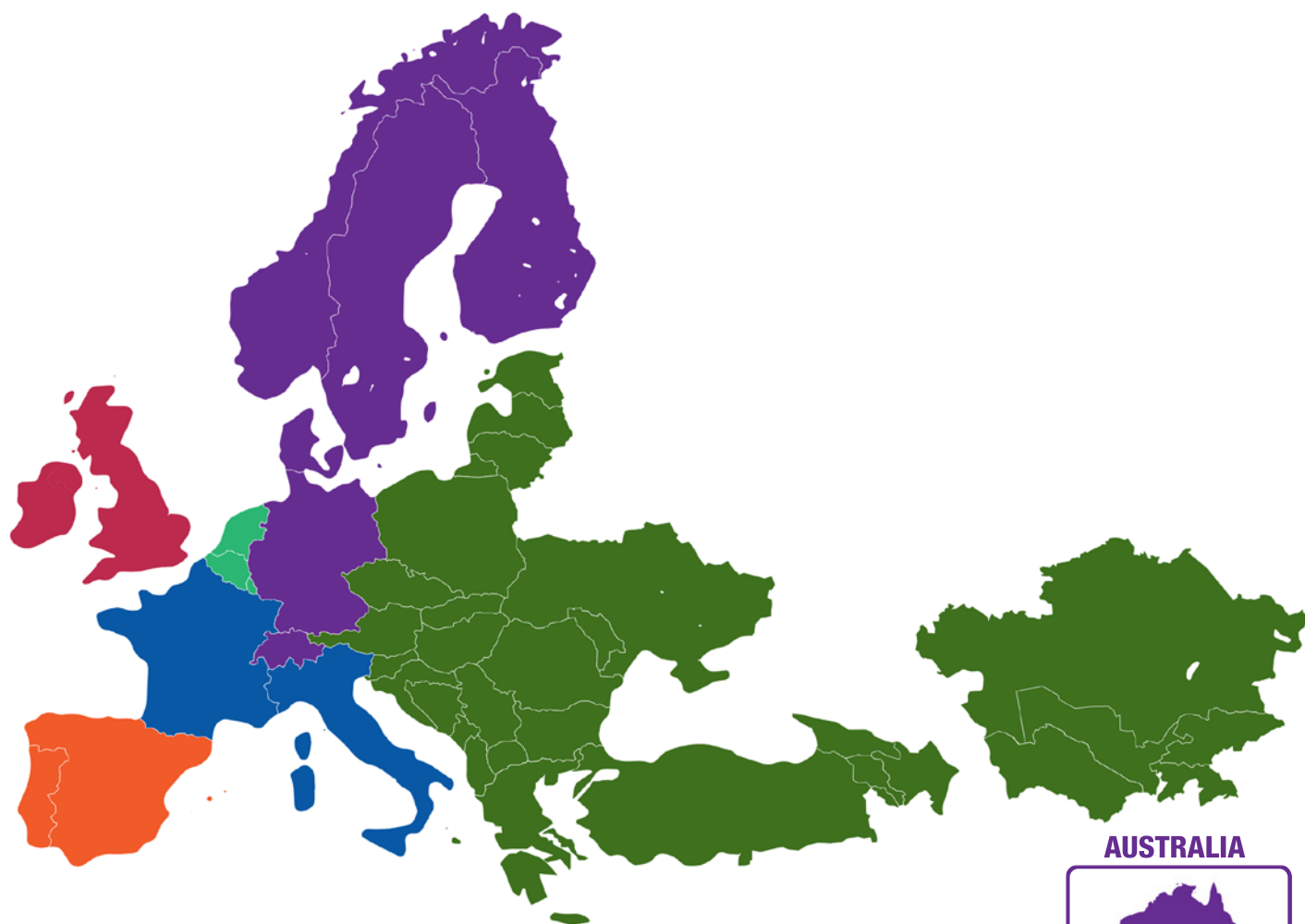
+33 (0)3 24 33 64 47
pr@arden-equipment.com



ARDEN

EQUIPMENT

OUR TEAM



AUSTRALIA



Daniel DUPUY

+33 (0)6 03 83 92 12
daniel.dupuy@arden-equipment.com
+ WORLDWIDE



Sean DONOVAN

+44 7 908 715 631
sean.donovan@arden-equipment.com



Lewis TABB

+44 7 946 378 556
lewis.tabb@arden-equipment.com



Jesús GINÉS

+34 667 65 37 96
jesus.gines@arden-equipment.com



Dominique NATUREL

+34 659 62 38 31
dominique.naturel@arden-equipment.com



Jean-Paul DEGRYSE

+32 496 52 04 59
jp.degryse@arden-equipment.com



Igor MALCEFF

+359 878 57 67 63
igor.malceff@arden-equipment.com



Artashes ARAKELIAN

+421 915 838 377
artashes.arakelian@arden-equipment.com



Julien NEIRINCK

+33 (0)6 02 12 07 78
julien.neirinck@arden-equipment.com

 French Manufacturer



+33 (0)3 24 33 64 30

contact@arden-equipment.com

9 avenue de l'Industrie FR - 08000 Charleville-Mézières

www.arden-equipment.com

SIRET 380 519 686 00022 APE 4663Z R.C.S SEDAN N°TVA : FR 20 380 519 686

