

# QUICK HITCH AECW SMALL - LARGE

## HYDRAULIC & MECHANICAL VERSIONS



### FEATURES :

The Quick Hitch **AECW** is ideal for work with excavators from 0,8 to 65 tons.

The AECW line – CW type quick hitching - is fitted to **buckets with a specific AECW imprint** or on buckets with TWIN® (reversible) hitches.

Depending on the model, she is **disponible in mechanical and hydraulic version.**

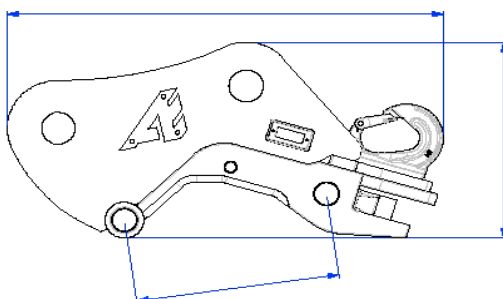
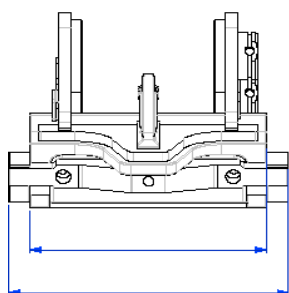
The hitches AECW20 to AECW55 are available in **standard or small (S)** version.

### ADVANTAGES :

- Hydraulic quick hitch
- Compliant with ISO standard
- Locking mechanism visual indicator

### OPTION :

Cardan quick hitch for AECW 20-30-40



Weight	Reference	A	B	C	D	E	Haydraulic		Minimum length	Weight
<i>t</i>	<i>Ref.</i>	<i>mm</i>	<i>mm</i>	<i>mm</i>	<i>mm</i>	<i>mm</i>	<i>b (max)</i>	<i>l/min</i>	<i>mm</i>	<i>kg</i>
0.8 - 3	<b>AECW05</b>	230	480	175	235	200	250	20/30	220	35
3 - 11	<b>AECW10</b>	350	640	310	390	300	250	20/30	370	110
12 - 15	<b>AECW20/S</b>	450	930	550/420	650/520	475	350	20/30	630	255
16 - 19	<b>AECW30/S</b>	450	930	550/420	651/520	475	350	20/30	640	275
20 - 31	<b>AECW40/S</b>	450	930	550/420	652/420	475	350	20/30	640	290
25 - 45	<b>AECW45/S</b>	560	1000	690/550	820/680	570	350	20/30	750	410
40 - 65	<b>AECW55</b>	Contact us								

