

STANDARD DITCHING BUCKET

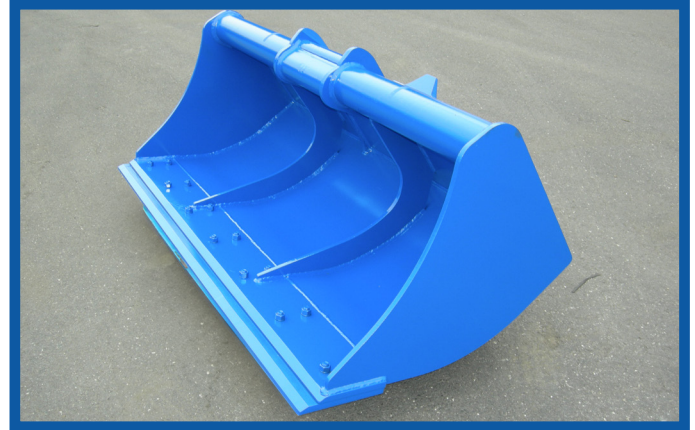


Buckets specially designed for creating and maintaining ditches!

The buckets are designed to work with shovels from 1.1 to 11 tons.

These ditching buckets are available in bare blade version, with bolted counter blade or welded counter blade. They are ideal for cleaning or creating ditches or for surface stripping and loading.

Their length and capacity may vary to suit the excavator.



Characteristics

- ✓ Available with ATR / AIO / AT / QA / UA / AECW / S quick couplings or a direct hook.
- ✓ Bolted counter blade and counter welded blade.

Adaptability

Performance

Compatibility

Security

Options :

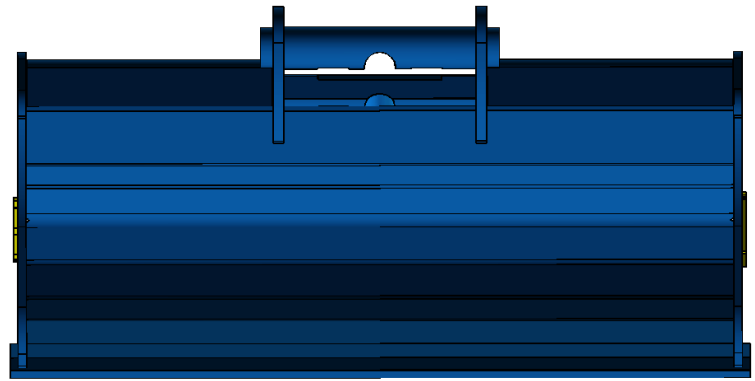
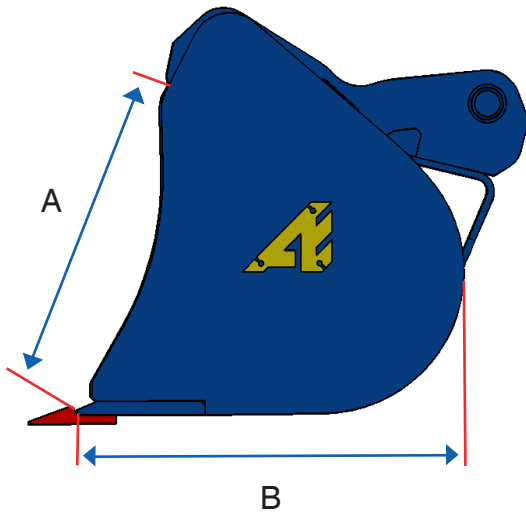
Second bottom + belt : Allows reinforcement of the bottom and sides of the bucket.

Bolted counter blade

Counter welded blade.



Technical drawings



| t | Reference | KG * | | A | B | Length / Capacity | |
|-----------|-----------|------|-----|-----|-----|-------------------|------------|
| | | min | max | | | min | max |
| | | kg | kg | mm | mm | mm/lt | mm/lt |
| 1,1 - 1,4 | C05R05 | 39 | | 272 | 347 | 600 / 37 | |
| 1,5 - 3 | C05R08 | 50 | 84 | 375 | 420 | 600 / 60 | 1200 / 125 |
| 3 - 3,5 | C10F02 | 91 | 104 | 405 | 445 | 1000 / 120 | 1200 / 145 |
| 2,6 - 3 | C10R12 | 105 | 113 | 347 | 390 | 1200 / 130 | 1400 / 140 |
| | C10F02 | 107 | 125 | 405 | 445 | 1200 / 145 | 1500 / 187 |
| 3,1 - 4,9 | C10R22 | 126 | 129 | 383 | 440 | 1200 / 180 | 1500 / 225 |
| | C10F22 | 128 | 152 | 455 | 485 | 1200 / 200 | 1500 / 255 |
| 5 - 6 | C10F22 | 152 | | 455 | 485 | 1500 / 255 | |
| | C10F32 | 157 | 173 | 545 | 565 | 1400 / 320 | 1600 / 365 |
| 6 - 10 | C20R12 | 215 | | 440 | 518 | 1500 / 270 | |
| | C20F12 | 250 | 261 | 556 | 623 | 1500 / 345 | 1600 / 370 |
| 10 - 11 | C20R22 | 261 | 292 | 542 | 600 | 1500 / 380 | 1750 / 445 |
| | C20F22 | 266 | 297 | 644 | 698 | 1500 / 430 | 1750 / 505 |

* Weight with QA kit and bare blade.



+33 (0)3 24 33 64 30
 contact@arden-equipment.com
 9 avenue de l'Industrie FR - 08000 Charleville-Mézières
 www.arden-equipment.com

