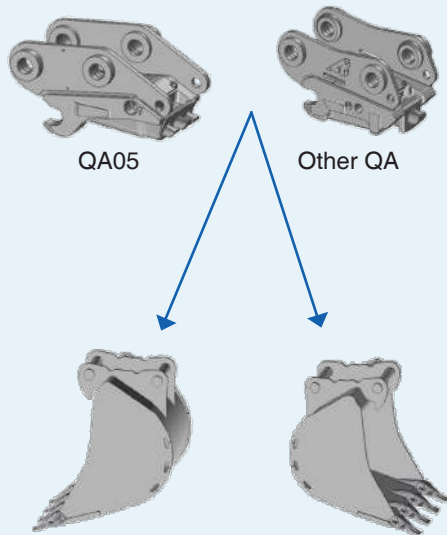


Possible machine connection

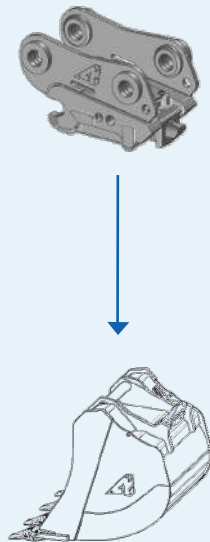
QA SERIES 3 MOUNTING

For excavators from 0.8t to 16t
and from 20t to 27t*



Available for backhoe
or face-shovel operation.

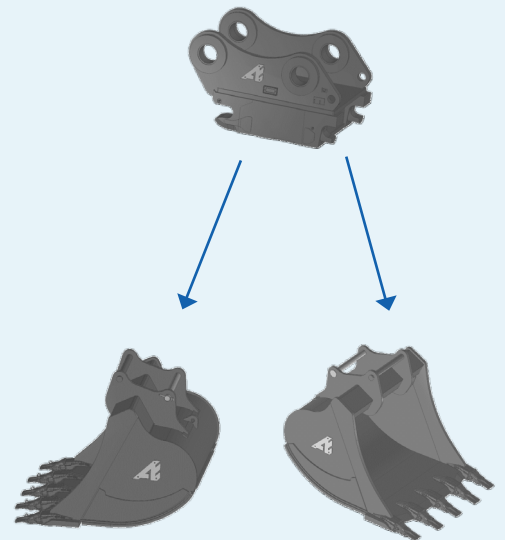
For excavators from 16t to 20t
and from 27t to 37t*



Available for backhoe operation.

AES MOUNTING

For excavators from 2,6t to 75t*



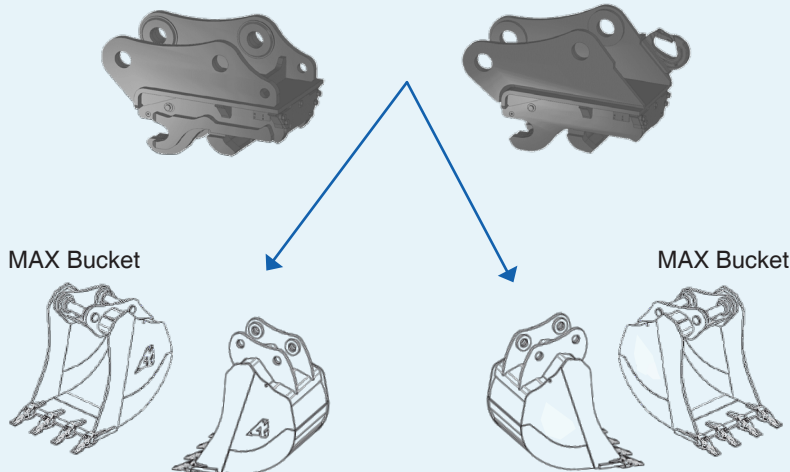
Available for backhoe
or face-shovel operation.

UA MOUNTING

For excavators from 2,6t to 53t*

Standard version

Version with optional lifting hook



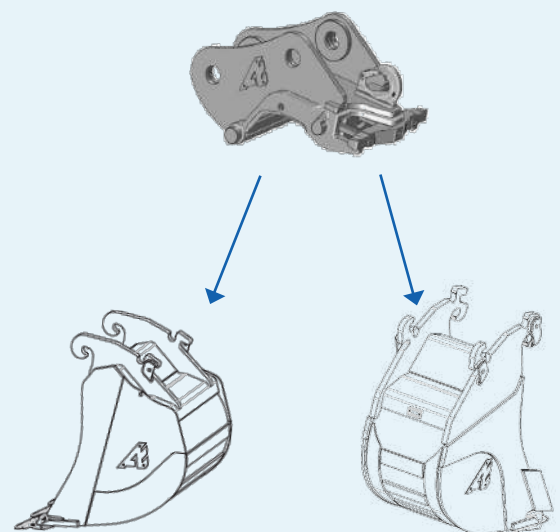
Bucket built
to machine dimensions

Bucket built
to machine dimensions

Available for backhoe or face-shovel operation.

CW MOUNTING

For excavators from 0,5t to 65t*



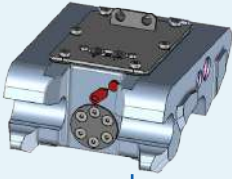
Bucket with standard
coupler for backhoe digging.

Bucket with reversible TWIN
coupler for both backhoe
and face-shovel use.

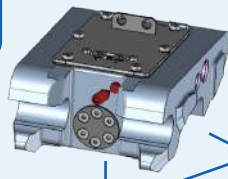
QA SERIES 3 AND EARLIER MOUNTING

Class 100 & 200

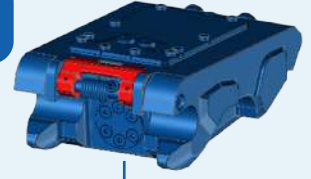
QA10-H
QA20-H
QA11-H
QA21-H



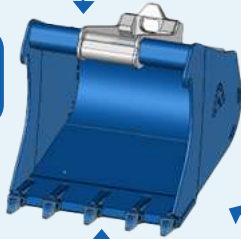
QA12-H
QA22-H



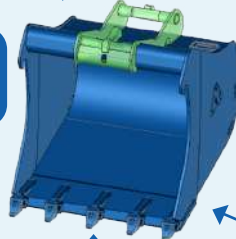
QA13-H
QA23-H



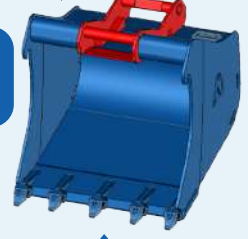
Non-reversible
bucket
Ref : ...-0XXX



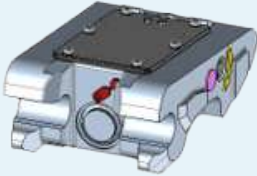
Reversible
bucket
Ref : ...-8XXX



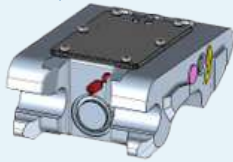
Reversible
bucket
Ref : ...-7XXX



QA10-M
QA20-M
QA11-M
QA21-M



QA12-M
QA22-M



QA13-M
QA23-M

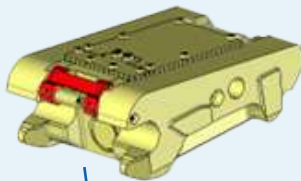


Class 300 to 600

QA30-H to QA60-H
QA31-H to QA61-H
QA32-H to QA62-H

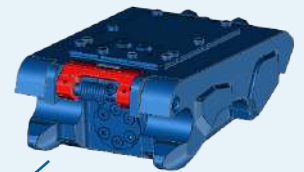


QA32AH / QA42AH
QA52AH / QA62AH

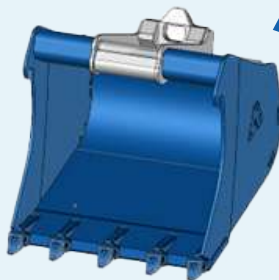


QA33-H / QA43-H
QA53-H / QA62BH*

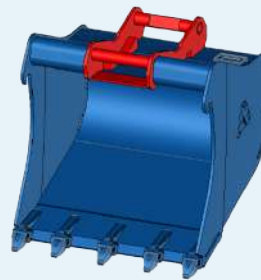
*Except QA62BH, which will not be offered in a reversible version



Non-reversible
bucket
Ref : ...-0XXX



Reversible
bucket
Ref : ...-7XXX



QA30-M to QA60-M
QA31-M to QA61-M
QA32-M to QA62-M

