

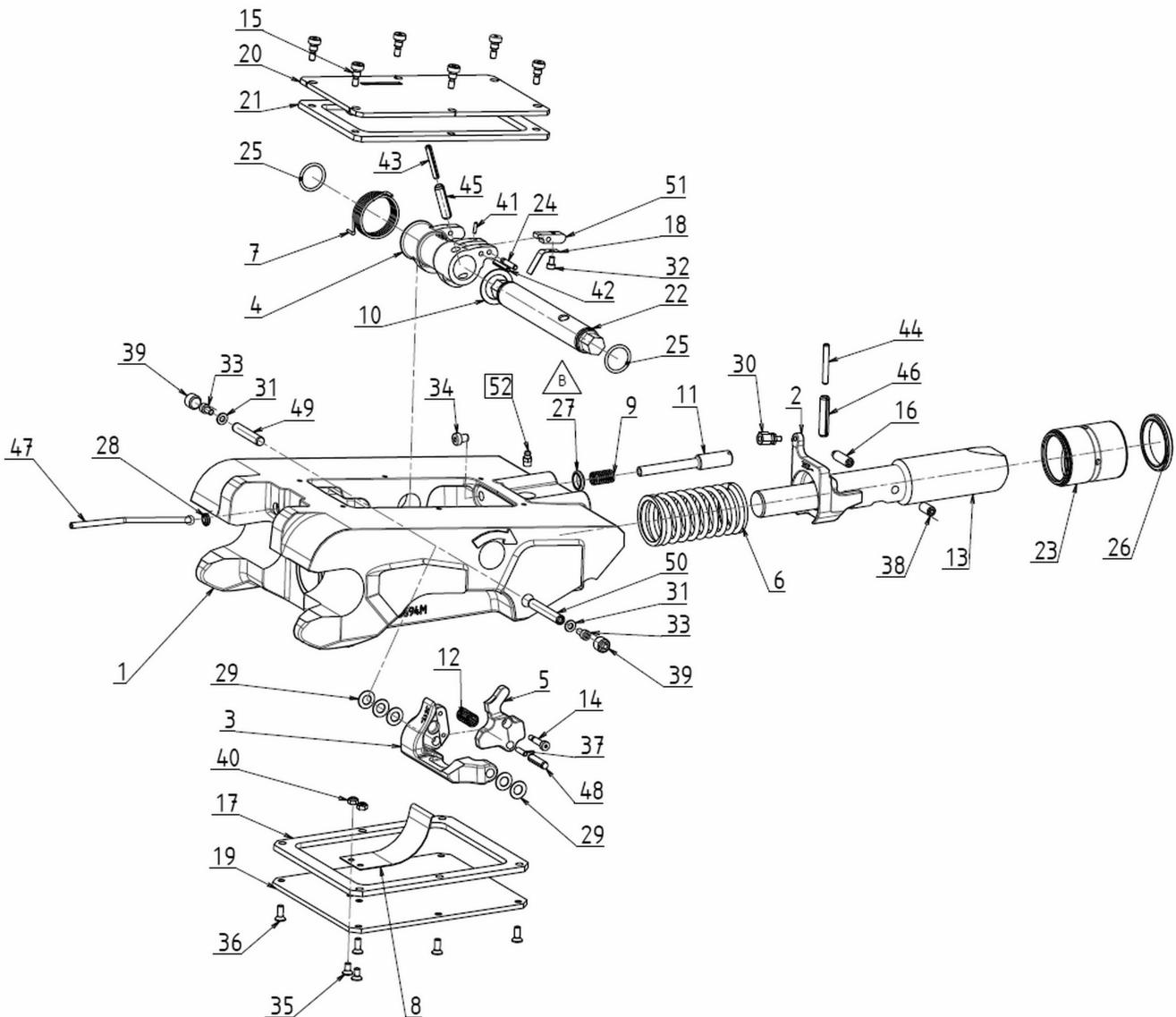
Quick Coupler QA23M

Date of review: 12-janv.-26

Review: C

Exploded view

QA23M_C



FR - Assembler le sous-ensemble EXTEND REP3+5+12+14+37+48
 Appliquer du frein-filet sur les vis 14 + 37 + 48
 Installer REP38 affleurant avec la goupille de verrouillage REP13
 Positionner REP16 en butée
 Appliquer du frein-filet sur les vis 16 + 38

UK - Assemble the subassembly EXTEND REP3+5+12+14+37+48
 Apply threadlocker to screws 14 + 37 + 48
 Install REP38 flush with locking pin REP13
 Set REP16 against the stop
 Apply threadlocker to screws 16 + 38

AVERTISSEMENT OBLIGATOIRE : utiliser du frein-filet LOCTITE 243 sur les vis du couvercle

MANDATORY WARNING: use LOCTITE 243 threadlocker on the cover screws

SK - Zostaviť podzostavu EXTEND REP3+5+12+14+37+48
 Naneste závitové lepidlo na skrutky 14 + 37 + 48
 Namontovať REP38 zároveň s poistným kolíkom REP13
 Nastaviť REP16 na doraz
 Naneste závitové lepidlo na skrutky 16 + 38

SP - Montar el subconjunto EXTEND REP3+5+12+14+37+48
 Aplicar fijador de roscas en los tornillos 14 + 37 + 48
 Instalar REP38 enrasado con el pasador de bloqueo REP13
 Colocar REP16 contra el tope
 Aplicar fijador de roscas en los tornillos 16 + 38

POVINNÉ UPOZORNENIE: použite závitové lepidlo LOCTITE 243 na skrutky krytu

ADVERTENCIA OBLIGATORIA: utilizar fijador de roscas LOCTITE 243 en los tornillos de la tapa

Quick Coupler QA23M

Date of review: 12-janv.-26

Review: C

Pos	Part Number	Qty	Description	S/No - Remarks
01	X3694M-ENS	1	Frame	
02	X3687	1	Square	
03	X3615	1	Spring stirrup	
04	X3686	1	Fork	
05	X3707	1	Molded trigger	
06	X91600	1	Spring	
07	X91257	1	Spring	
08	X91259	1	Spring	
09	X94758	1	Spring	
10	X91604-100	1	Shim ring	
11	X94953	1	Probe	
12	X94226	1	Spring	
13	X94748	1	Pin	
14	X94673	1	Socket head capscrew	
15	X92117	6	Screw plug	
16	X94813	1	Stop screw	
17	X94763	1	Seal / Packing	
18	X94691	1	Spring	
19	X94762	1	Cover	
20	X95142	1	Higher cap	
21	X91617	1	Cover seal	
22	X91277	1	Fork pin	
23	X80191	1	Bushing	
24	X73938	1	Pin	
25	J30061	2	O-Ring	
26	J30069	1	Wiper ring	
27	J30424	1	Wiper ring	
28	J30473	1	Wiper ring	
29	RR10-020-05	5	Disc springs	
30	RAC30611	1	Threaded adapter	
31	RP06	2	Flat washer	
32	CHC05-008C08	1	Socket head capscrew	
33	CHC06-012C12	2	Socket head capscrew	
34	CHC08-010C10TR	1	Socket head capscrew	
35	FHC06-012C10	2	Hex socket Countersunk head screw	
36	FHC06-016C10	6	Hex socket Countersunk head screw	
37	HCPL05-018C10	1	Bolt	
38	HCPL10-020C10	1	Bolt	
39	HCPL16-012C10PF	2	Bolt	
40	HFR06	2	Self-locking nut	
41	GE03-012	1	Spring-type straight pin	
42	GE05-030	1	Spring-type straight pin	
43	GE06-040	1	Spring-type straight pin	
44	GE06-045	1	Spring-type straight pin	
45	GE10-040	1	Spring-type straight pin	
46	GE10-045	1	Spring-type straight pin	
47	FLEXQA23M	1	Safety indicator	
48	GTC08-032	1	Parallel pin	
49	GTC10-055	1	Parallel pin	
50	GTC10-065	1	Parallel pin	
51	X28352-005	1	Pusher cam	
52	GM8	1	Grease nipple	