

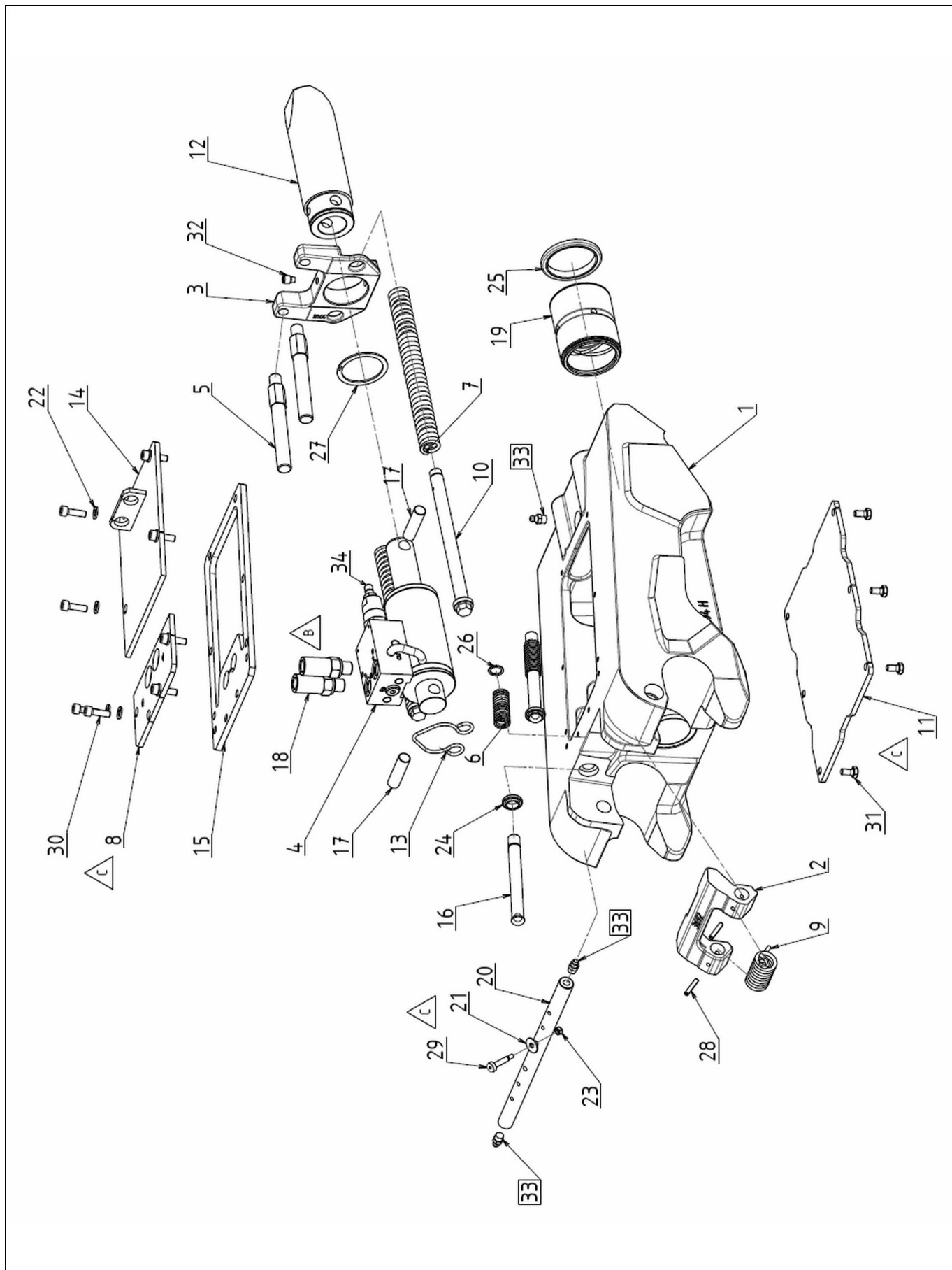
# Quick Coupler QA23H

Date of review: 05-févr.-24

Review: C

Exploded view

QA23H\_C



# Quick Coupler QA23H

Date of review: 05-févr.-24

Review: C

Pos	Part Number	Qty	Description	S/No - Remarks
01	X3694H-ENS	1	Frame	
02	X3692	1	Security hook	
03	X3705	1	Spring stirrup	
04	V1277-RP	1	Cylinder	
05	X94730	2	Pin	
06	X94709	2	Spring	
07	X92029	2	Spring	
08	X95486	1	Higher cap	
09	X94842	1	Spring	
10	X92017	2	Spring rod	
11	X95484	1	Lower cap	
12	X91980	1	Pin	
13	X92100	1	Pin clamp	
14	X95488	1	Hood	
15	X94821	1	Cover seal	
16	X94855	2	Pin	
17	X92047	2	Pin	
18	X94245-040	2	Connection	
19	X80191	1	Bushing	
20	X72971	1	Pin	
21	RP05L	1	Flat washer	
22	RP06	8	Flat washer	
23	HFR04	1	Self-locking nut	
24	J30474	2	Wiper ring	
25	J30069	1	Wiper ring	
26	CIR012E	2	Retaining ring for bore	
27	CIR045E	1	Retaining ring for bore	
28	GE04-024	2	Spring-type straight pin	
29	X95549	1	Bolt	
30	CHC06-020C12	8	Socket head capscrew	
31	HM06-012C08	6	Hex head capscrew	
32	HCTL08-012C12	1	Locking screw	
33	GM8	3	Grease nipple	
34	CLAP30070	1	Choke valve	