

UNI ARDEN QUICK HITCH

UA series 3

UA13 - UA23 - UA 33 - UA 43 - UA53 - UA63 - UA73



Versatility, adaptability, compactness and safety.

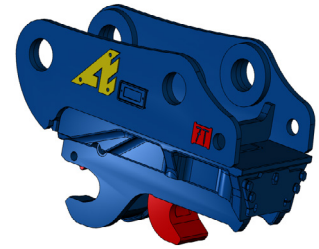
The Arden Equipment series 3 quick hitch range fits all brands for 2.6 to 53-ton excavators.

UA series 3 quick hitches allow the use of buckets from different manufacturers, with various pin centers and pin diameters.

The UA series 3 hitch range is one of the most compact on the market. Arden Equipment also offers buckets with recessed kits to reduce the stick-to-teeth distance and maintain maximum breakout force.

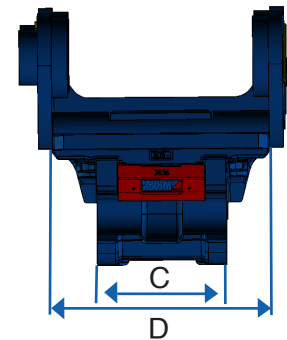
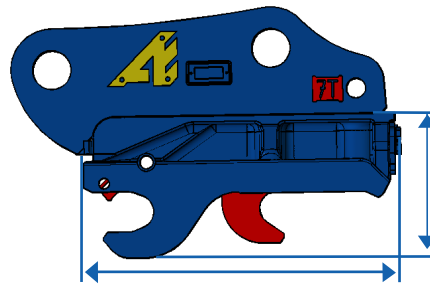
UA quick hitches meet all safety standards thanks to:

- ✓ The safety check valve on the cylinder.
- ✓ The automatic front pin holding pallet or a patented ratchet system, depending on the model.
- ✓ UA series 3 quick hitches being equipped with automatic and permanent play compensation.



Features:

- ✓ Hydraulic version
- ✓ Handling hole
- ✓ Picking up different pins and pin centers (see table).
- ✓ Working in shovel or backhoe configuration.



t	Reference	KG	A mm	B mm	C** mm	D mm	Jack pressure		Jack flow rate	
							bar	l/min	maxi	min
2.6 - 6	UA13035040	50	383	190	120	220	350	10	20	
	UA13045050	50	428	201.5	120	220				
6 - 12	UA23045050	95	506	228	160	300	350	10	20	
	UA23055060		506	228	160	300				
	UA23LG045050		556	228	160	300				
	UA23LG055060		556	228	160	300				
12 - 16	UA33060070P2	287	643	289	220	400	350	10	20	
	UA33060070P1		643	289	220	400				
16 - 20	UA43060070P2	287	643	289	220	400	350	10	20	
	UA43060070P1		643	289	220	400				
	UA43080		643	289	220	400				
20 - 27	UA53080090	320	726	327	280	470	350			
27 - 37	UA63080-090	500	817	375	320	570	350	10	20	
	UA63090100		817	375	320	570				
38 - 53	UA73S-H	920	993	452	368	548	350	10	20	
	UA73L-H	970	1043	452	448	700				

* Data, including weight, are provided for information purposes only. They may vary depending on the excavator adaptations.

** Bare base dimensions, without spacers.



Technical specifications

T	Reference	Diameter Ø 35mm		Diameter Ø 40mm		Diameter Ø 45mm		Diameter Ø 50mm		Diameter Ø 55mm		Diameter Ø 60mm	
		Min. spacing	Max. spacing	Min. spacing	Max. spacing	Min. spacing	Max. spacing	Min. spacing	Max. spacing	Min. spacing	Max. spacing	Min. spacing	Max. spacing
2.6 - 6	UA13035040	165	220	175	235								
	UA13045050					218	270	228	285				
6 - 11	UA23045050					263	309	275	325				
	UA23055060									285	340	290	355
	UA23LG045050					314	363	322	375				
	UA23LG055060									334	388	338	403

T	Reference	Diameter Ø 60mm		Diameter Ø 65mm		Diameter Ø 70mm		Diameter Ø 80mm	
		Min. spacing	Max. spacing	Min. spacing	Max. spacing	Min. spacing	Max. spacing	Min. spacing	Max. spacing
12 - 15	UA33060070P2	285	350	294	366	303	381		
	UA33060070P1	345	410	354	426	363	441		
16 - 19	UA43060070P2	285	350	294	366	303	381		
	UA43060070P1	345	410	354	426	363	441		
	UA43080							367	458

T	Reference	Diameter Ø 80mm		Diameter Ø 90mm		Diameter Ø 100mm		Diameter Ø 110mm		Diameter Ø 120mm	
		Min. spacing	Max. spacing	Min. spacing	Max. spacing	Min. spacing	Max. spacing	Min. spacing	Max. spacing	Min. spacing	Max. spacing
20 - 26	UA53080090	391	500	411	531						
27 - 37	UA63080090	430	523	450	554						
	UA63090100			450	554	469	585				
38 - 53	UA73S			425	569	445	598	466	630	487	663
	UA73L			473	619	495	648	515	680	536	713

Options :

- ✓ Hydraulic kit
- ✓ Welded lifting hook on the driver's side
- ✓ Additional pin kit

Our UA can also be offered as a bottom base for AT and ATR.

Technical data and visuals are non-contractual and subject to change without prior notice.

