



Versatility and productivity on your jobsites

Our ATRs are compatible with all excavators from 2 to 30 tons.

Designed for earthmoving, utility or rail works, our Arden Tilt Rotors offer total control of the bucket or tools thanks to a combination of hydraulic tilt and rotation, without compromising on compactness or robustness.

Their versatility saves time on jobsites while limiting machine movements, thus reducing transport needs and fuel consumption. They also improve working conditions by providing a safer environment for operators.

They are available with 5 types of quick hitches: AIO, QA, UA, AECW, and AES, depending on the model.

Features

- ✓ **2LP control system:** 4-hose system for excavators equipped with 2 proportional lines (double acting) in order to switch functions.
- ✓ **OSCP control system:** 2-hose system for any excavator from one hydraulic line in order to combine functions.
- ✓ Telescopic cylinders (from ATR010).
- ✓ Safety valves integrated into the cylinders.
- ✓ Additional hydraulic line combinable with the gripper option (from ATR010).
- ✓ Endless 360° rotation and 40° tilt on each side.
- ✓ Centralized single-point lubrication.



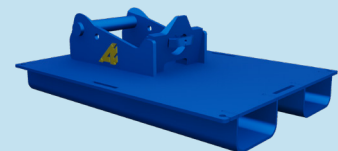
Options:

Pipe gripper (from ATR006)

Sensor for 3D/GPS system

Steering control system for crawler and wheeled excavators in OSCP version

Transport stand



View of an ATR-QA stand



ATR015 AES



ATR015 AIO



ATR015 AECW



ATR015 QA



ATR015 UA



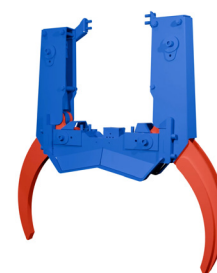
ATR technical specifications

t	Reference	Max bucket width	Max bucket capacity	Tilt Motor torque*	Min/max pressure	Gripper module (option)	Telescopic cylinders	Max extra line flow	High flow line «Tilt»	Low flow line «Rotation»
		mm	L	daNm	MPa			L/min	L/min	L/min
2 - 4	ATR004	1000	115	390	18/21		No	20	10 - 20	10 - 15
3 - 6	ATR006	1300	270	1230	18/21	MP45	No	25	20 - 50	15 - 20
7 - 12	ATR010	1400	400	2060/2530	18/21	MP60	Yes	25	20 - 40	20 - 25
12 - 15	ATR015	1500	640	2340/3140	18/21	MP80	Yes	40	30 - 60	25 - 35
15 - 20	ATR018	1800	800	3700/4600	18/21	MP80	Yes	40	30 - 70	30 - 40
20 - 24	ATR022	2000	1025	4100/5200	18/21	MP80	Yes	50	35 - 80	30 - 40
22 - 30	ATR028	2000	1250	5200/5300	18/21	MP80	Yes	50	40 - 90	35 - 45

*Tilt torque, given at 21MPa, may vary depending on the type of cylinders used

Gripper module technical specifications

Reference	KG *	Max opening	Gripping force*	Lifting capacity	Min-max oil flow	Max hydraulic pressure
		mm	kN	kg	L/min	Mpa
MP45	40	450	5.9	400	15 - 25	21
MP60	70	600	9	600	20 - 40	21
MP80	135	800	10.3	800	25 - 50	21

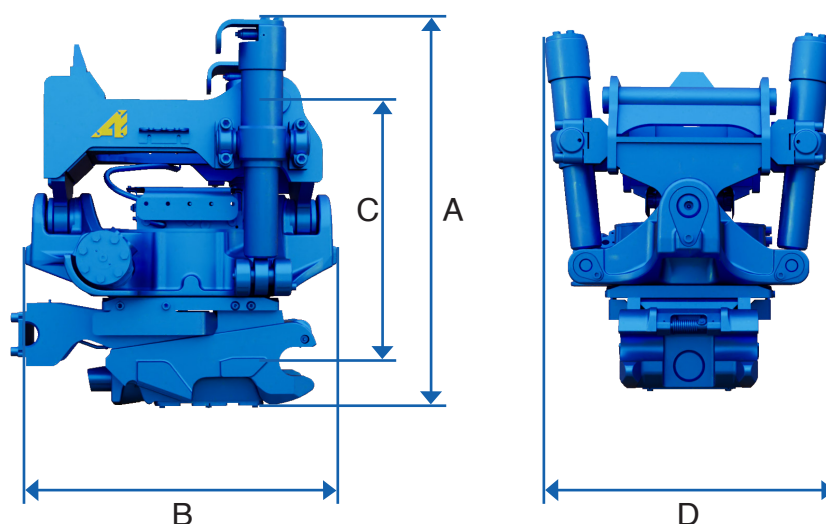


Technical drawings

Arden Tilt Rotor with QA bottom attachment

t	Reference	KG *	A*	B*	C*	D*
			mm	mm	mm	mm
2 - 4	ATR004-QA05H	100	725	465	330	440
3 - 6	ATR006-QA13H	170	850	495	390/410	422
7 - 12	ATR010-QA23H	290	795	590/640	475/515	610
12 - 15	ATR015-QA33H	470	860	726/807	580	700/789
15 - 20	ATR018-QA42AH	600	1000	770	600	805
20 - 24	ATR022-QA53H	670	1040/1130	530/1000	705	860
22 - 24	ATR028-QA53H	750	1080/1110	920/1040	610/710	860/920

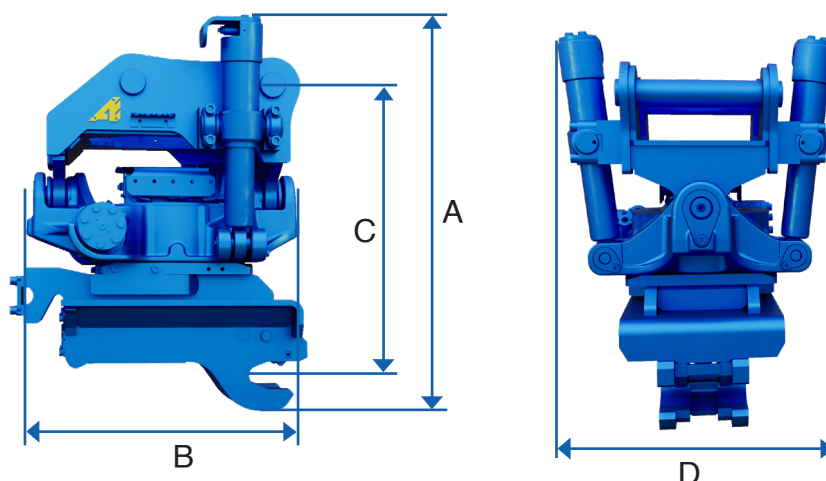
* Data, including weight, are provided for information only for an ATR with direct mount and may vary depending on the top attachment and cylinders used.



Arden Tilt Rotor with UA bottom attachment

t	Reference	KG *	A*	B*	C*	D*
			mm	mm	mm	mm
3 - 6	ATR006-UA13H	180	945	545	575	440
7 - 12	ATR010-UA23H	300	915	595	630	610
12 - 15	ATR015-UA33H	500	985	855	725	700
15 - 20	ATR018-UA43H	610	1125	900	780	805
20 - 24	ATR022-UA53H	740	1165	965	845	860
22 - 30	ATR028-UA53H	800	Contact us			

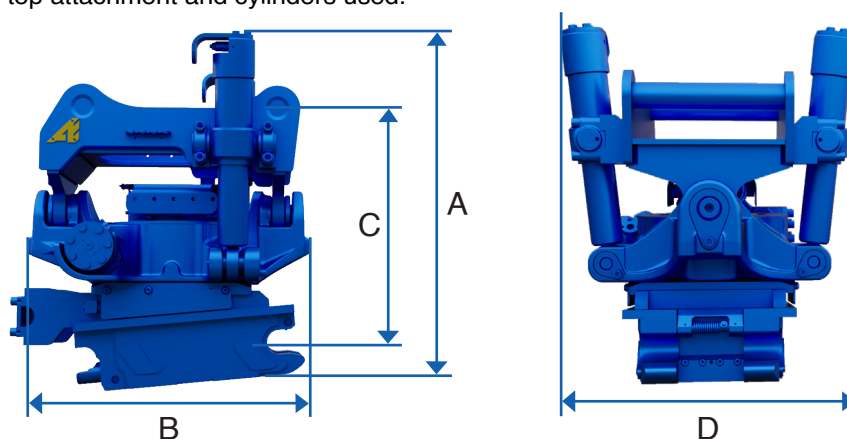
* Data, including weight, are provided for information only for an ATR with direct mount and may vary depending on the top attachment and cylinders used.



Arden Tilt Rotor with AES bottom attachment

t	Reference	KG *	A*	B*	C*	D*
			mm	mm	mm	mm
2 - 4	ATR004-AES040H	120	850	495	390/410	422
3 - 6	ATR006-AES040H	190	795	590/640	475/515	610
7 - 12	ATR010-AES045H	267	820	620	540	650
7 - 12	ATR010-AES050H	320	860	726/807	580	700/789
12 - 15	ATR015-AES060H	391	1000	770	600	805
15 - 20	ATR018-AES060H	466	1040/1130	530/1000	705	860
20 - 24	ATR022-AES070H	732	1080/1110	920/1040	610/710	860/920
22 - 30	ATR028-AES070H	890	1080/1130	920/1040	610/750	860/920

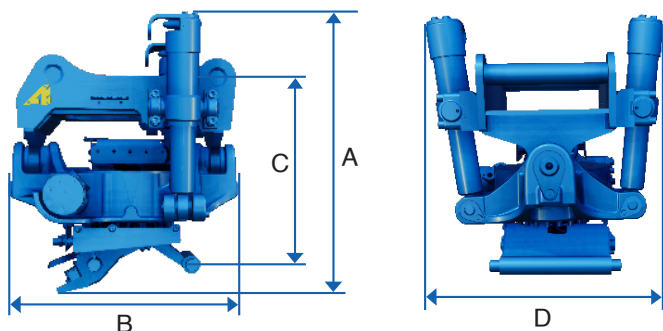
* Data, including weight, are provided for information only for an ATR with direct mount and may vary depending on the top attachment and cylinders used.



Arden Tilt Rotor with CW bottom attachment

t	Reference	KG *	A*	B*	C*	D*
			mm	mm	mm	mm
3 - 6	ATR006-CW10H	170	740	495	500	415/470
7 - 12	ATR010-CW10H	290	890	640	590	600
12 - 15	ATR015-CW20(S)H	490	970	830	675	668/789
15 - 20	ATR018-CW30(S)H	600	1020	860	540	810
20 - 24	ATR022-CW40(S)H	670	1130	1000	730	830/850
22 - 30	ATR028-CW40(S)H	840	1150	1040	820	860/920

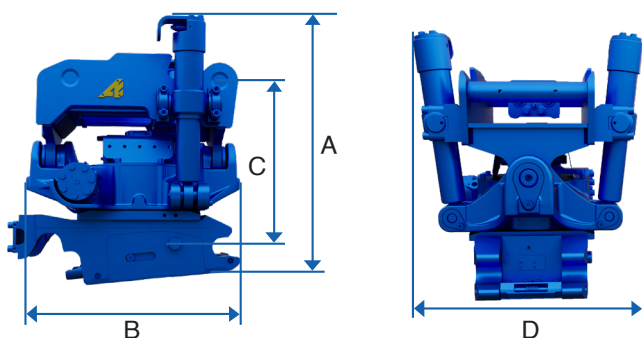
* Data, including weight, are provided for information only for an ATR with direct mount and may vary depending on the top attachment and cylinders used.



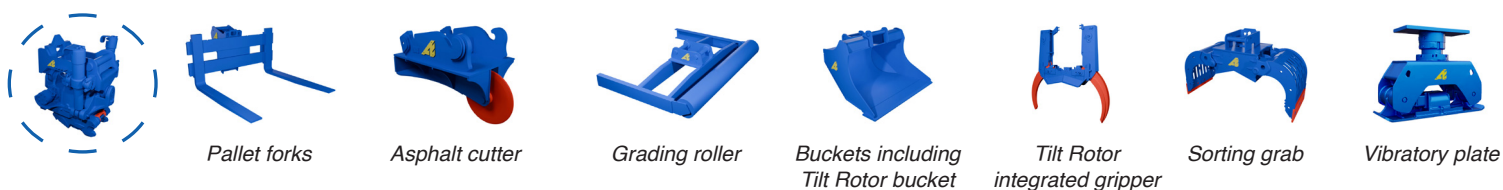
Arden Tilt Rotor with AIO bottom attachment

t	Reference	KG *	A*	B*	C*	D*
			mm	mm	mm	mm
12 - 15	ATR015-AIO350	485	720	762	538	698

* Data, including weight, are provided for information only for an ATR with direct mount and may vary depending on the top attachment and cylinders used.



Tool compatibility:



Technical data and visuals are non-contractual and subject to change without prior notice.

