

ARDEN EQUIPMENT PRESENTATION



EARTHMOVING



DEMOLITION



SCRAP METAL



RECYCLING



HANDLING



RAILWAY



LANDSCAPING



BUCKETS • QUICK HITCHES • GRABS • SHEARS • CRUSHERS • BREAKERS • GRAPPLES • CLAMSHELL



200+ employees



5 foreign subsidiaries



Membership of a group



50 years of experience



Exporting to 50 countries



7 business sectors

Building together the innovations of tomorrow.



Laurent DARDENNE
Managing Director
ARDEN EQUIPMENT

Dear customers and partners,

At Arden Equipment, we develop our solutions with a clear guiding principle: to design reliable, high-performance equipment tailored to the practical demands of the field, whilst preparing our product ranges for the future. Our approach is based on experience, listening to our users, and a constant commitment to improving our products and services.

Among our major developments, we are preparing a new generation of mini-excavator buckets for 2026. Their design will allow them to accommodate the main quick-coupler kits without any modifications to the bucket body, with the aim of improving our lead times and responding more quickly to your requests. In line with this approach, we are continuing to develop S-type couplers to ensure broad compatibility with existing fleets of machinery. Our dual-purpose interchangeable solution, based on the AIO automatic connection system, also illustrates this move towards greater versatility, allowing you to switch quickly from a demolition or recycling tool to handling equipment using a single machine.

We are also working to optimise our production costs, without compromising on our core requirement: to maintain the high standards of quality and durability that characterise Arden Equipment. This approach applies in particular to our ranges of sorting and demolition grapples. By developing and streamlining our product ranges, we are able to offer more competitive solutions, whilst retaining tried-and-tested mechanical components that guarantee reliability in the field.

The launch of our new website marks another significant milestone. More than just a showcase, it serves as a genuine decision-making tool: featuring equipment and spare parts configurators, simplified access to technical and sales documentation, as well as an online purchasing platform exclusively for our distributor network, enabling them to order spare parts and certain equipment directly.

As Managing Director, and drawing on my previous experience as Industrial Director, I remain firmly committed to developing sustainable solutions, supporting you in your projects and building together the innovations of tomorrow.

Laurent DARDENNE
Managing Director

Get to know our company :



EARTHMOVING

COUPLERS 0.8t - 75t ARDEN TILTS 0.8t - 32t TILTROTORS 2t - 30t BUCKETS 0.8t - 90t



AIO Quick hitch



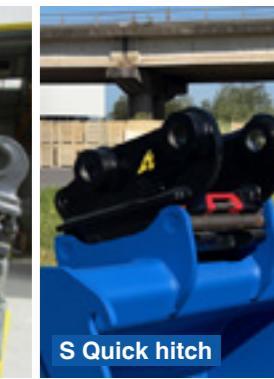
QA Quick hitch



UA Quick hitch



CW Quick hitch



S Quick hitch



AIO Quick hitch - Arden Tilt Rotor - Gripper - Skeleton bucket



Ditching bucket



AIO Quick hitch



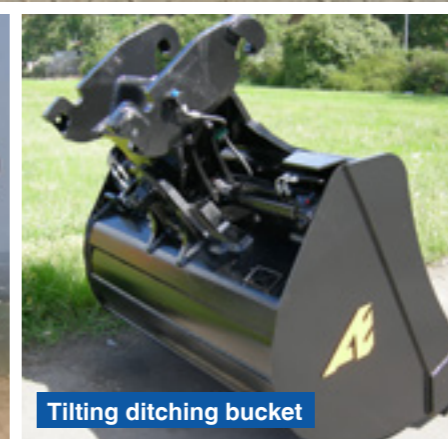
QA Quick hitch - Arden Tilt Rotor - Bucket



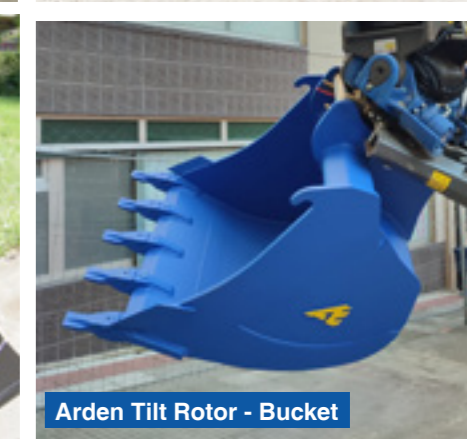
Levelling bar



Quarry usage bucket



Tilting ditching bucket



Arden Tilt Rotor - Bucket



DEMOLITION

CRUSHERS  13t - 80t

BREAKERS  0.5t - 100t

SHEARS  2.5t - 100t

GRABS  2.5t - 90t

BEAM 



Hydraulic Crusher



Hydraulic Breaker



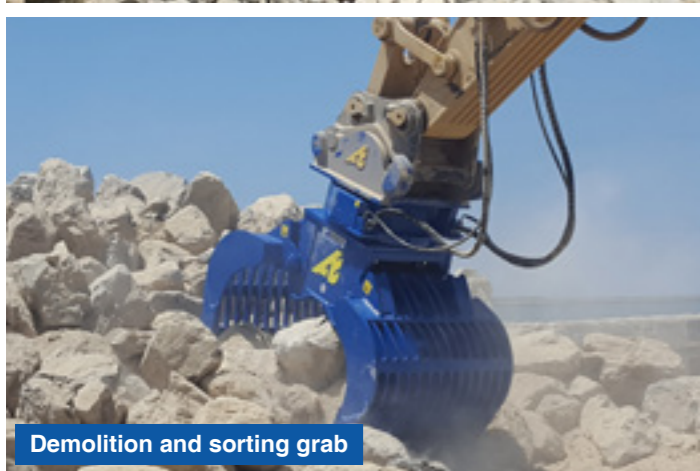
Shears with changeable jaws



Shears with changeable jaws - Arden Jet



Shears with dedicated jaws



Demolition and sorting grab



Demolition beam



SCRAP & RECYCLING

GRAPPLES  6t - 90t

SCRAP SHEARS  9 - 90 t

MAGNETS  8 - 45 t



Grapple - Interchangeable dipper solution



Scrap shear - Interchangeable dipper solution



Arden Magnet - Hydraulic magnet



LANDSCAPING

RIPPING TOOTH  0.8t - 90t

BUCKETS  0.8t - 90t

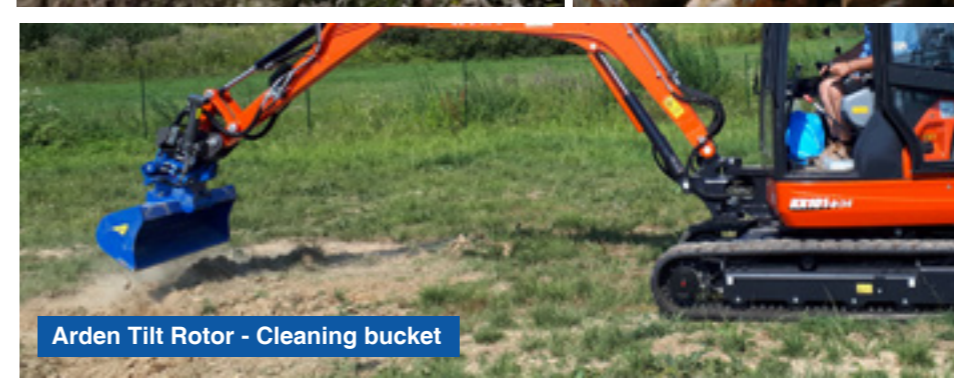
GRABS  0.8 - 6t



Mini-Blue - Multi-purpose sorting grab



Ripping tooth



Arden Tilt Rotor - Cleaning bucket



Trapezoidal bucket



HARBOUR

CLAMSHELLS  5t - 70t and [©]

BUCKETS  7t - 55t



Harbour clamshell



River clamshell with standard PTO shaft



Clamshell



High-tip bucket



RAILWAY

BALLAST TRACK REMOVER 

16t - 22t

RAILWAY GRAB 

8t - 23t

BEAM AND CATENARY GRABS 

14t - 23t



Ballast track remover



Railway grab



Beam and catenary grabs



NEW WEBSITE

DISCOVER OUR NEW E-COMMERCE WEBSITE:
BUILT-IN CONFIGURATOR, ORDERS AND REAL-TIME QUOTES!



Find the right attachments for your excavator using our configurator:

Select the **weight**, **brand** and **model** of your machine, then filter by tool type. Compatible equipment is displayed instantly, ready to be ordered or added to your quote.

Spare parts: quick and easy to order online

Find and order your parts in just a few clicks on our website:

- **Using the configurator:** enter the **serial number** or model name of your equipment.
- **By category:** go straight to the part via the 'Spare Parts' tab.
- **From the product page:** go to the 'Spare Parts' tab.

Access all our documentation

- Product pages
- User guides
- Spare parts diagrams

Create your customer account now!
www.arden-equipment.com



REPAIR + SERVICE

The Repair + service gives your tools a **second life**. Our experts can advise you on how to repair tools that are still in working order, offering a cost-effective solution.

AFTERMARKET

+44 7946 378556

lewis.tabb@arden-equipment.com

SPARE PARTS

+44 7946 378556

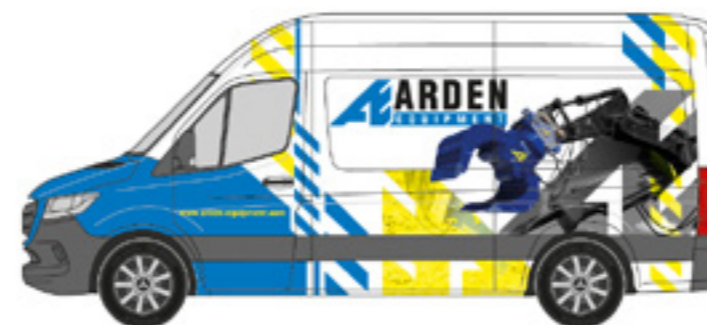
lewis.tabb@arden-equipment.com



BEFORE / AFTER



MOBILE SERVICE ENGINEERS



Arden Equipment provides you with a team of qualified technicians, from commissioning to repairing your tools.

Got a question, need some advice, or experiencing a fault? We're here to help.



ARDEN

EQUIPMENT

OUR TEAM



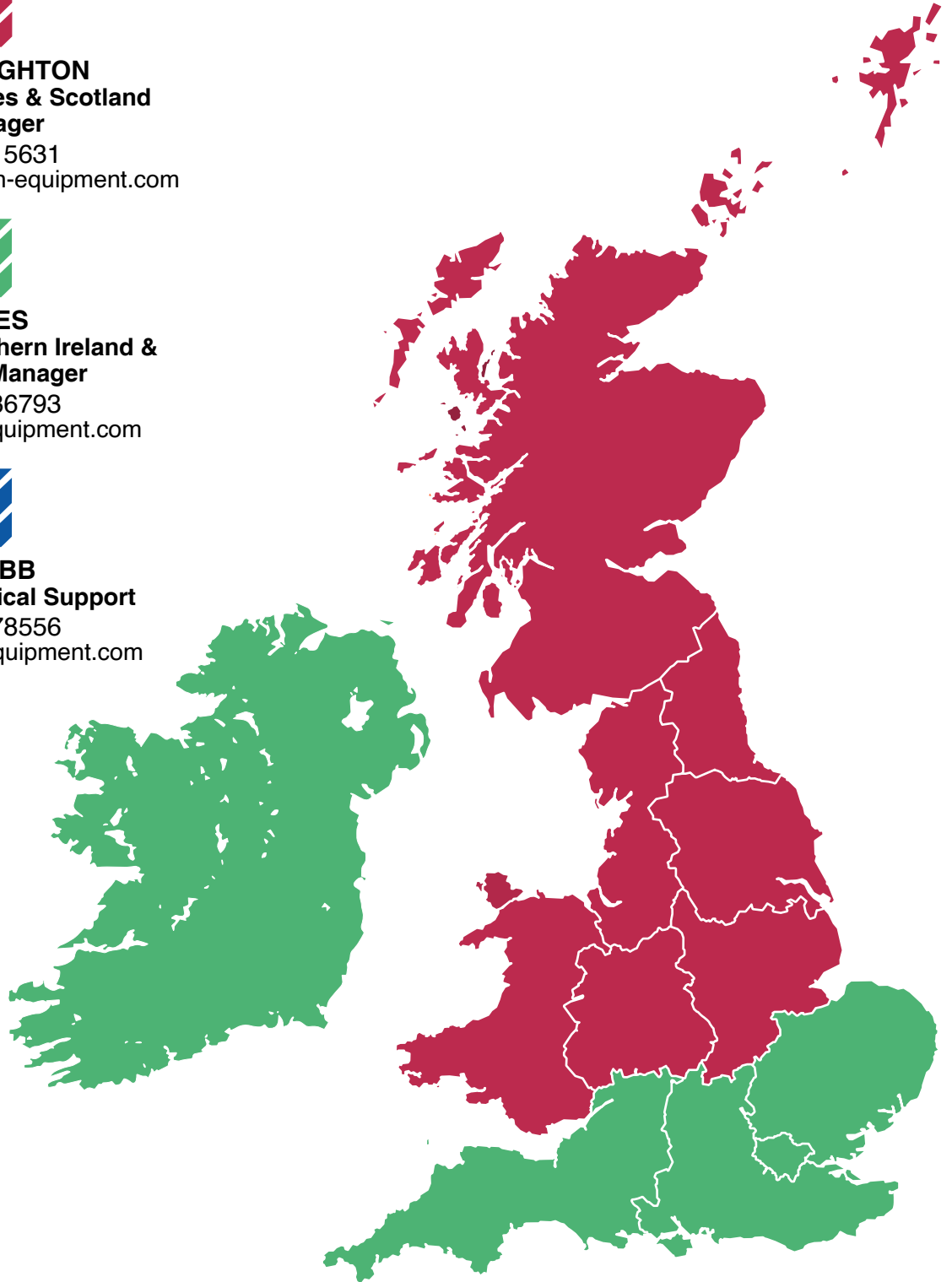
Richard CREIGHTON
North England, Wales & Scotland
Sales Manager
+44 7908 715631
richard.creighton@arden-equipment.com



Pat JAMES
South England, Northern Ireland &
Ireland Sales Manager
+44 7957 236793
pat.james@arden-equipment.com



Lewis TABB
UK / Ireland Technical Support
+44 7946 378556
lewis.tabb@arden-equipment.com



Printed by Fusion Graphic 4 Rue François Urano, 06000 Warcq - Do not throw on the public highway - Non-contractual information and subject to modification without notice



 +33 (0)3 24 33 64 30
 info@arden-equipment.co.uk
 4B Harriott Drive, Heathcote Industrial Estate, Warwick. CV34 6TJ
 www.arden-equipment.com/uk/