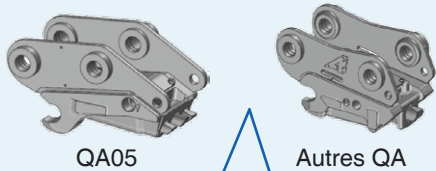


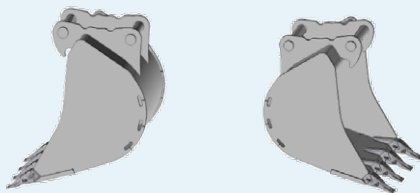
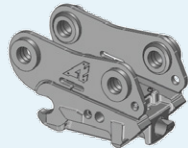
Liaisons machines possibles

MONTAGE QA SÉRIE 3

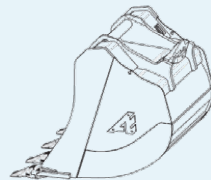
Pour pelles de 0,8t à 16t
et 20t à 27t*



Pour pelles de 16t à 20t
et 27t à 37t*



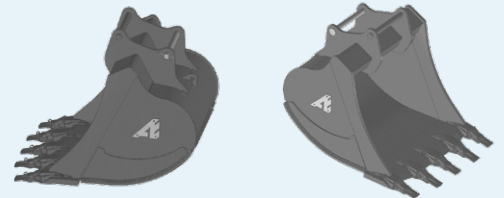
Disponible en travail rétro ou butte.



Disponible en travail rétro.

MONTAGE AES

Pour pelles de 2,6t à 75t*



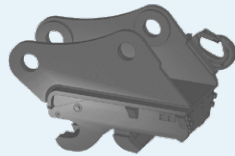
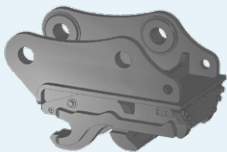
Disponible en travail rétro ou butte.

MONTAGE UA

Pour pelles de 2,6t à 53t*

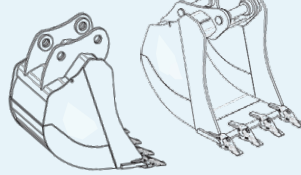
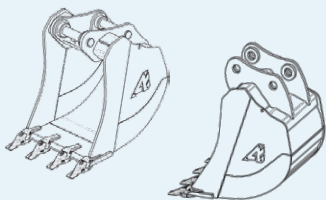
Version standard

Version avec option crochet



Godet MAX

Godet MAX



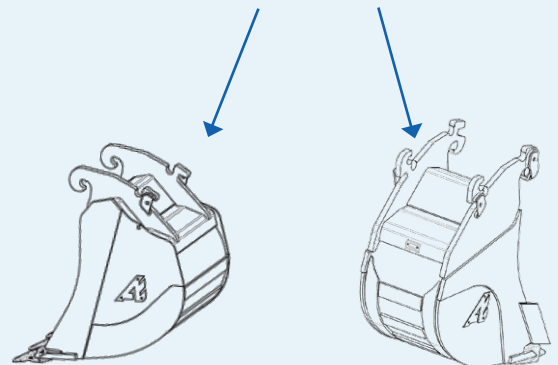
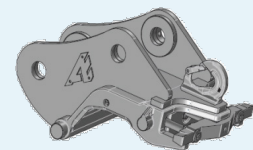
Godet aux côtes machines

Godet aux côtes machines

Disponible en travail rétro ou butte.

MONTAGE CW

Pour pelles de 0,8t à 65t*



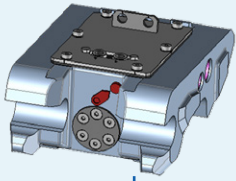
Godet avec
attache classique
en travail rétro.

Godet avec
attache TWIN réversible
en travail rétro et butte.

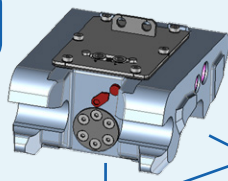
MONTAGE QA SÉRIE 3 ET ANTERIEUR

Classe 100 & 200

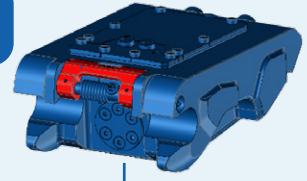
QA10-H
QA20-H
QA11-H
QA21-H



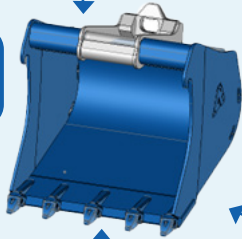
QA12-H
QA22-H



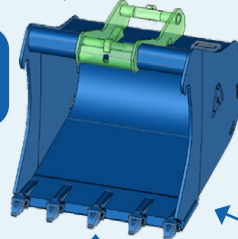
QA13-H
QA23-H



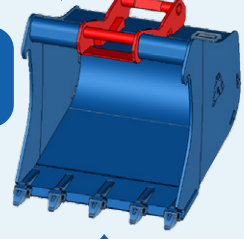
Godet
non réversible
Réf : ...-0XXX



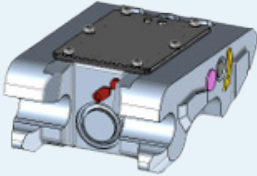
Godet
réversible
Réf : ...-8XXX



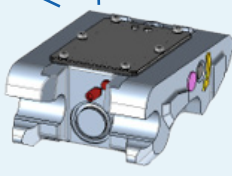
Godet
réversible
Réf : ...-7XXX



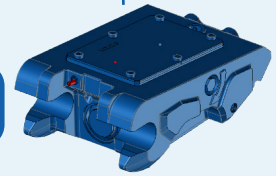
QA10-M
QA20-M
QA11-M
QA21-M



QA12-M
QA22-M

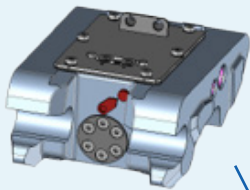


QA13-M
QA23-M

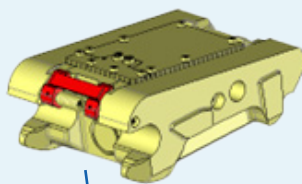


Classe 300 à 600

QA30-H à QA60-H
QA31-H à QA61-H
QA32-H à QA62-H

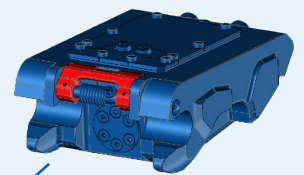


QA32AH / QA42AH
QA52AH / QA62AH

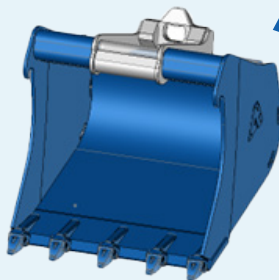


QA33-H / QA43-H
QA53-H / QA62BH*

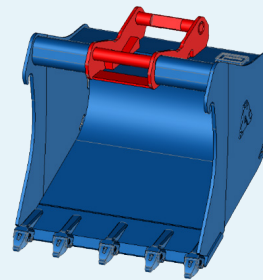
*Sauf QA62BH qui ne sera pas proposée en réversible



Godet
non réversible
Réf : ...-0XXX



Godet
réversible
Réf : ...-7XXX



QA30-M à QA60-M
QA31-M à QA61-M
QA32-M à QA62-M

