

COUPLEUR UNI ARDEN

UA 3 series

UA13 - UA23 - UA 33 - UA 43 - UA53 - UA63 - UA73



Versatility, adaptability, safety and robustness.

The Arden Equipment 3 Series couplers range offers versatility by adapting to all brand types for excavators from 2.6 to 53 Tons.

The UA 3 Series couplers are able to accept buckets from various manufacturers with different axes and axes diameters.

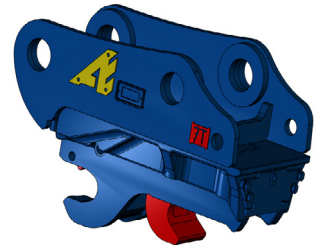
The UA 3 Series couplers range is one of the most compact on the market.

Arden Equipment also proposes MAX buckets to minimize the distance between the rotation point of the excavator and bucket teeth and thus maintain maximum force.

UA couplers meet all safety standards thanks to:

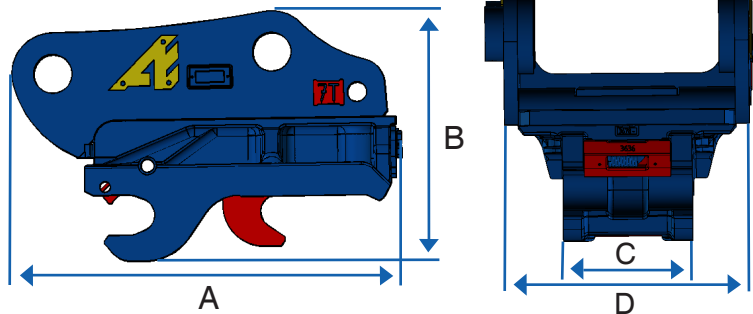
- ✓ The safety valve on the cylinder.
- ✓ The automatic front pin support safety gate.
- ✓ Its retaining springs or its patented ratchet system depending on the model.

The UA 3 Series couplers are equipped with automatic and permanent play catch-up.



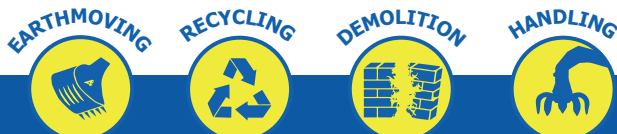
Characteristics:

- ✓ Hydraulic version
- ✓ Hydraulic kit for adaptation on excavator.
- ✓ Resumption of different pins and spans (see table).
- ✓ Work in butt or retro configuration.



T	Reference	KG *	A *	B *	C *	D *
			mm	mm	mm	mm
2.6 - 6	UA13035040	50	383	190	120	220
	UA13045050	50	428	201.5	120	220
6 - 11	UA23045050	60	506	228	160	300
	UA23055060					
	UA23LG045050					
12 - 15	UA23LG055060	65	556			
	UA33060070P2	287	643	289	220	440
UA33060070P1						
16 - 19	UA43060070P2	287	643	289	220	400
	UA43060070P1					
	UA43080					
20 - 26	UA53080090	333	726	327	280	470
27 - 37	UA63080090	460	817	375	320	570
	UA63090100					
38 - 53	UA73S	920	1270	870	368	548
	UA73L	970	1300	870	448	700

* The data, including weight, is provided for reference only and may vary depending on the adaptations on the excavator.



Technical characteristics

T	Reference	Diameter Ø 35mm		Diameter Ø 40mm		Diameter Ø 45mm		Diameter Ø 50mm		Diameter Ø 55mm		Diameter Ø 60mm	
		Spacing min	Spacing max	Spacing min	Spacing max	Spacing min	Spacing max	Spacing min	Spacing max	Spacing min	Spacing max	Spacing min	Spacing max
2.6 - 6	UA13035040	165	220	175	235								
	UA13045050					218	270	228	285				
6 - 11	UA23045050					263	309	275	325				
	UA23055060									285	340	290	355
	UA23LG045050					314	363	322	375				
	UA23LG055060									334	388	338	403

T	Reference	Diameter Ø 60mm		Diameter Ø 65mm		Diameter Ø 70mm		Diameter Ø 80mm	
		Spacing min	Spacing max	Spacing min	Spacing max	Spacing min	Spacing max	Spacing min	Spacing max
12 - 15	UA33060070P2	285	350	294	366	303	381		
	UA33060070P1	345	410	354	426	363	441		
16 - 19	UA43060070P2	285	350	294	366	303	381		
	UA43060070P1	345	410	354	426	363	441		
	UA43080							367	458

T	Reference	Diameter Ø 80mm		Diameter Ø 90mm		Diameter Ø 100mm		Diameter Ø 110mm		Diameter Ø 120mm	
		Spacing min	Spacing max	Spacing min	Spacing max	Spacing min	Spacing max	Spacing min	Spacing max	Spacing min	Spacing max
20 - 26	UA53080090	391	500	411	531						
27 - 37	UA63080090	430	523	450	554						
	UA63090100			450	554	469	585				
38 - 53	UA73S			425	569	445	598	466	630	487	663
	UA73L			473	619	495	648	515	680	536	713

Options :

- ✓ ARDEN TILT
- ✓ ARDEN TILT ROTOR

Technical data and visuals are non-contractual and subject to change without prior notice.

