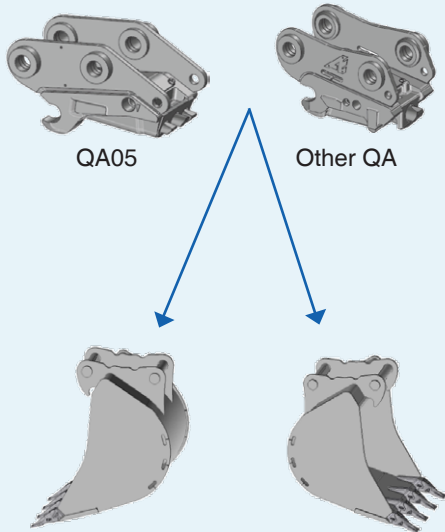


# Possible machine connection

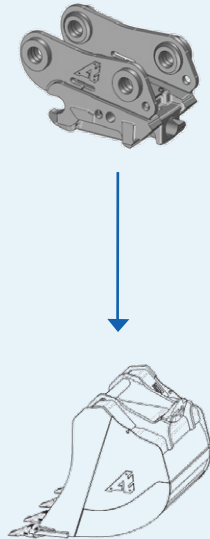
## QA SERIES 3 MOUNTING

For excavators from 0,8t to 16t  
and from 20t to 27t\*



Available for backhoe  
or face-shovel operation.

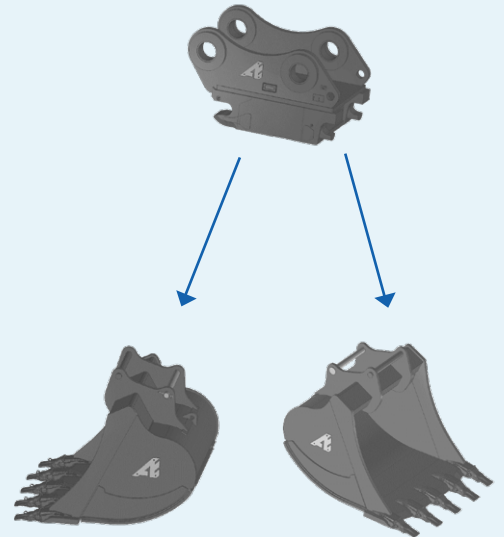
For excavators from 16t to 20t  
and from 27t to 37t\*



Available for backhoe operation.

## AES MOUNTING

For excavators from 2,6t to 75t\*



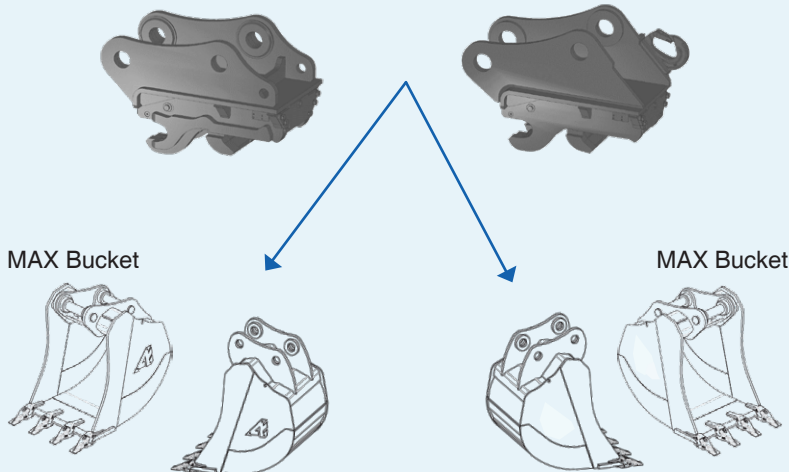
Available for backhoe  
or face-shovel operation.

## UA MOUNTING

For excavators from 2,6t to 53t\*

Standard version

Version with optional lifting hook



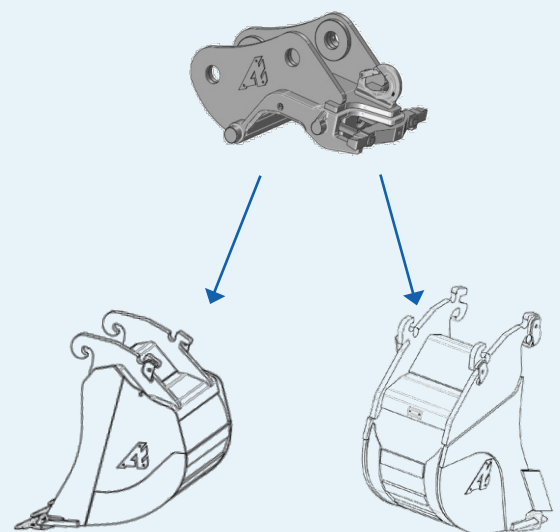
Bucket built  
to machine dimensions

Bucket built  
to machine dimensions

Available for backhoe or face-shovel operation.

## CW MOUNTING

For excavators from 0,8t to 65t\*



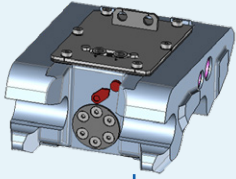
Bucket with standard  
coupler for backhoe digging.

Bucket with reversible TWIN  
coupler for both backhoe  
and face-shovel use.

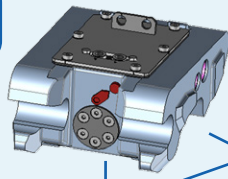
# QA SERIES 3 AND EARLIER MOUNTING

## Class 100 & 200

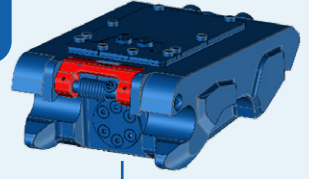
QA10-H  
QA20-H  
QA11-H  
QA21-H



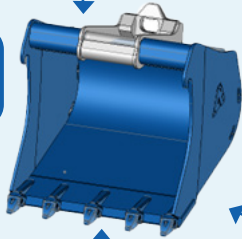
QA12-H  
QA22-H



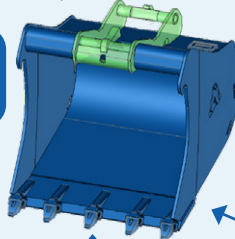
QA13-H  
QA23-H



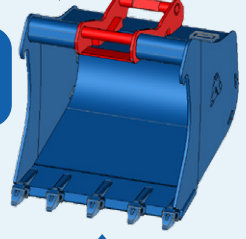
Non-reversible  
bucket  
Ref : ...-0XXX



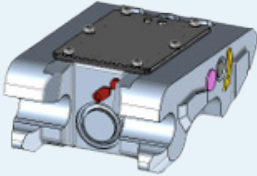
Reversible  
bucket  
Ref : ...-8XXX



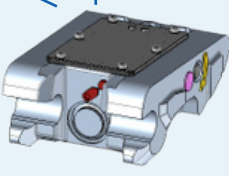
Reversible  
bucket  
Ref : ...-7XXX



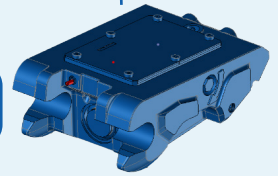
QA10-M  
QA20-M  
QA11-M  
QA21-M



QA12-M  
QA22-M

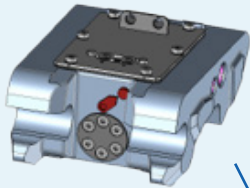


QA13-M  
QA23-M

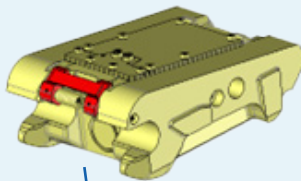


## Class 300 to 600

QA30-H to QA60-H  
QA31-H to QA61-H  
QA32-H to QA62-H

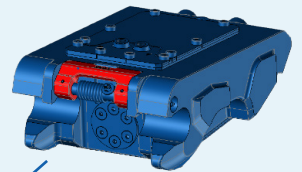


QA32AH / QA42AH  
QA52AH / QA62AH

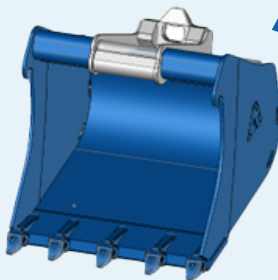


QA33-H / QA43-H  
QA53-H / QA62BH\*

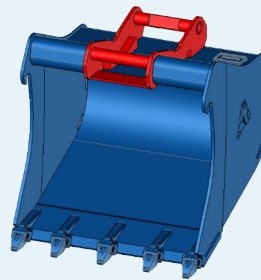
\*Except QA62BH, which will not be offered in a reversible version



Non-reversible  
bucket  
Ref : ...-0XXX



Reversible  
bucket  
Ref : ...-7XXX



QA30-M to QA60-M  
QA31-M to QA61-M  
QA32-M to QA62-M

