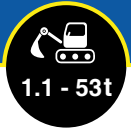


DITCH CLEANING BUCKET

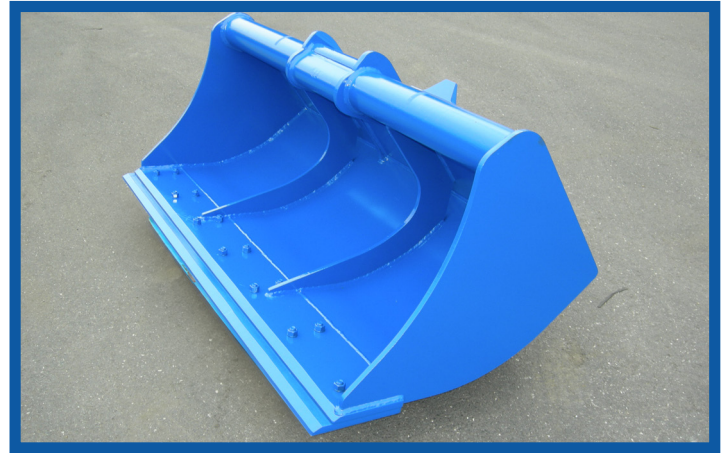


Buckets specially designed for creating and maintaining ditches!

Ditch cleaning buckets are designed to work with excavators from 1.1 to 53 tons.

They are available in a bare edge version, with a bolted cutting edge, or a welded delta cutting edge. They are ideal for cleaning or creating ditches, as well as for surface stripping and loading.

Their width and capacity can be adapted to perfectly match the carrier.



Visual of a CXXF

Features

- ✓ Compatible with QA / UA / AECW / AES / AIO quick couplers, Tilt and Tiltrotator systems, or direct mount.
- ✓ Preserves the manufacturer's original kinematics depending on the coupler.
- ✓ Reversible on most models (QA and AECW, consult us).

Heavy-duty options:

The **double bottom and side wear plates** reinforce the bottom and sides of the bucket on smaller models (standard on models for excavators from 12t).

Additional reinforcement strap on certain models from 12t.

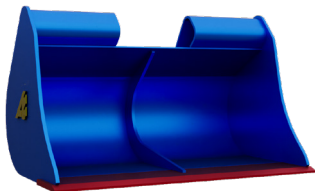
Options:

Rear edge

Bolted cutting edge

Welded delta cutting edge

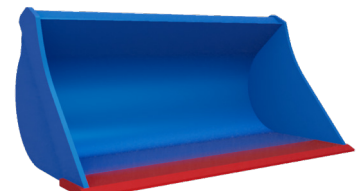
Profiles



Visual of a CXXF



Visual of a CXXR

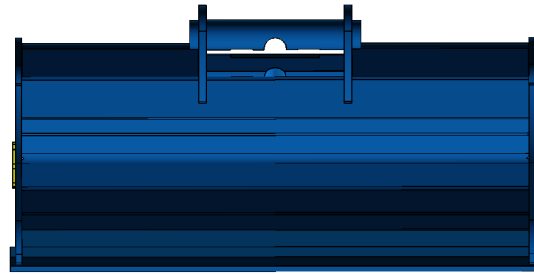
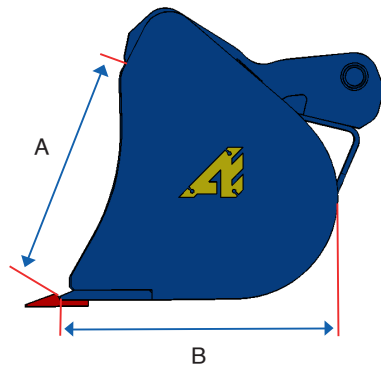


Visual of a CY2



Technical drawings

Visual of a CXXR



t	Reference	KG *		A	B	Width / Capacity	
		min	max			min	max
		Kg	Kg	mm	mm	mm/lt	mm/lt
1,1 - 1,4	C05R05	39		272	347	600 / 37	
1,5 - 3	C05R08	48	82	375	420	600 / 60	1200 / 125
3 - 3,5	C10F02	97	109	405	445	1000 / 120	1200 / 145
2,6 - 3	C10R12	110	116	347	390	1200 / 130	1400 / 140
	C10F02	109	127	405	445	1200 / 145	1500 / 187
3,1 - 4,9	C10R22	128	151	383	440	1200 / 180	1500 / 225
3,1 - 6	C10F22	129	153	455	485	1200 / 200	1500 / 255
5 - 6	C10F32	161	176	545	565	1400 / 320	1600 / 365
6 - 10	C20R12	220		440	518	1500 / 270	
	C20F12	256	268	556	623	1500 / 345	1600 / 370
10 - 11	C20R22	268	300	542	600	1500 / 380	1750 / 445
	C20F22	277	308	644	698	1500 / 430	1750 / 505
12 - 16	C31R20	312	340	660	673	1800 / 560	2000 / 625
12 - 20	CY2-034	587		880	860	1800 / 850	
12 - 20	CY2-039	625		970	920	1800 / 1025	
16 - 20	CY2-044	664		1017	976	1800 / 1135	
16 - 20	C41R25	449	478	745	760	1800 / 690	2000 / 770
20 - 27	C51R35	668	707	920	945	2000 / 1120	2200 / 1180
20 - 27	C51R48	1001		1082	1108	2200 / 1535	
20 - 27	C51R55	937		1122	1172	1800 / 1355	
20 - 27	C51R60	962		1214	1241	1800 / 1550	
27 - 30	C55R40	1043		955	965	2200 / 1365	
27 - 37	C61R40	1184		955	975	2400 / 1440	
27 - 37	C61R55	1335		1122	1172	2200 / 1690	
27 - 37	C61R60	1231		1214	1241	1800 / 1550	
38 - 53	C70R55	1565		883	904	2400 / 1720	
38 - 53	C70R70	1732		1087	1200	2400 / 2310	
35 - 53	C70R100	2057		1590	1620	2400 / 3570	

* Weight may vary depending on its configuration, whether it is equipped with a QA or UA kit..., a standard edge, or a cutting edge

Technical data and visuals are non-contractual and subject to change without prior notice.



+33 (0)3 24 33 64 30

contact@arden-equipment.com

9 avenue de l'Industrie FR - 08000 Charleville-Mézières

www.arden-equipment.com

